

For Research Use Only

# RB1 Polyclonal antibody

Catalog Number: 30373-1-AP



## Basic Information

<b>Catalog Number:</b> 30373-1-AP	<b>GenBank Accession Number:</b> BC039060	<b>Purification Method:</b> Antigen affinity purification
<b>Size:</b> 150ul , Concentration: 700 µg/ml by Nanodrop;	<b>GeneID (NCBI):</b> 5925	<b>Recommended Dilutions:</b> WB 1:5000-1:50000
<b>Source:</b> Rabbit	<b>Full Name:</b> retinoblastoma 1	
<b>Isotype:</b> IgG	<b>Calculated MW:</b> 928 aa, 106 kDa	
	<b>Observed MW:</b> 110 kDa	

## Applications

<b>Tested Applications:</b> WB, ELISA	<b>Positive Controls:</b> WB : K-562 cells, HT-1080 cells
<b>Species Specificity:</b> Human	

## Background Information

The RB1 gene, a member of the pocket family with p107 and p130, was the first known tumor suppressor. RB1 protein is targeted by the transforming proteins of the DNA tumor viruses like adenoviral E1A and is functionally inactivated in most human tumor cells owing to mutations of either the RB1 gene itself or its upstream regulators (PMID: 22787429).

## Storage

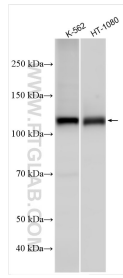
**Storage:**  
Store at -20°C. Stable for one year after shipment.  
**Storage Buffer:**  
PBS with 0.02% sodium azide and 50% glycerol pH 7.3.  
Aliquoting is unnecessary for -20°C storage

\*\*\* 20ul sizes contain 0.1% BSA

For technical support and original validation data for this product please contact:  
T: 1 (888) 4PTGLAB (1-888-478-4522) (toll free in USA), or 1(312) 455-8498 (outside USA)  
E: proteintech@ptglab.com  
W: ptglab.com

This product is exclusively available under Proteintech Group brand and is not available to purchase from any other manufacturer.

## Selected Validation Data



Various lysates were subjected to SDS PAGE followed by western blot with 30373-1-AP (RB1 antibody) at dilution of 1:25000 incubated at room temperature for 1.5 hours.