

For Research Use Only

LILRA2 Polyclonal antibody

Catalog Number: 30285-1-AP



Basic Information

Catalog Number: 30285-1-AP	GenBank Accession Number: BC017412	Purification Method: Antigen affinity purification
Size: 150ul , Concentration: 450 µg/ml by Nanodrop;	GeneID (NCBI): 11027	Recommended Dilutions: WB 1:500-1:2000
Source: Rabbit	Full Name: leukocyte immunoglobulin-like receptor, subfamily A (with TM domain), member 2	
Isotype: IgG	Calculated MW: 466 aa, 51 kDa	
Immunogen Catalog Number: AG32652	Observed MW: 69 kDa	

Applications

Tested Applications: WB, ELISA	Positive Controls: WB : A549 cells, HepG2 cells
Species Specificity: Human	

Background Information

Storage

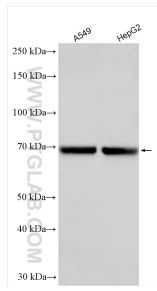
Storage:
Store at -20°C. Stable for one year after shipment.
Storage Buffer:
PBS with 0.02% sodium azide and 50% glycerol pH 7.3.
Aliquoting is unnecessary for -20°C storage

*** 20ul sizes contain 0.1% BSA

For technical support and original validation data for this product please contact:
T: 1 (888) 4PTGLAB (1-888-478-4522) (toll free in USA), or 1(312) 455-8498 (outside USA)
E: proteintech@ptglab.com
W: ptglab.com

This product is exclusively available under Proteintech Group brand and is not available to purchase from any other manufacturer.

Selected Validation Data



Various lysates were subjected to SDS PAGE followed by western blot with 30285-1-AP (LILRA2 antibody) at dilution of 1:1000 incubated at room temperature for 1.5 hours.