

For Research Use Only

# KIAA1429 Polyclonal antibody

Catalog Number: 30166-1-AP **1 Publications**



## Basic Information

<b>Catalog Number:</b> 30166-1-AP	<b>GenBank Accession Number:</b> BC003701	<b>Purification Method:</b> Antigen affinity purification
<b>Size:</b> 150ul , Concentration: 550 µg/ml by Nanodrop;	<b>GeneID (NCBI):</b> 25962	<b>Recommended Dilutions:</b> WB 1:2000-1:10000
<b>Source:</b> Rabbit	<b>Full Name:</b> KIAA1429	
<b>Isotype:</b> IgG	<b>Observed MW:</b> 200-210 kDa	
<b>Immunogen Catalog Number:</b> AG32830		

## Applications

<b>Tested Applications:</b> WB, ELISA	<b>Positive Controls:</b> WB : A431 cells, HeLa cells, K-562 cells, MDA-MB-231 cells, SKOV-3 cells
<b>Cited Applications:</b> WB	
<b>Species Specificity:</b> Human	
<b>Cited Species:</b> human	

## Background Information

VIRMA (KIAA1429) is a key component of m6A methyltransferase (writer) complex that include METTL3, METTL14, WTAP, VIRMA, HAKAI, ZC3H13, and RBM15. VIRMA mediates methylation in the 3'UTR and around the stop codon, thus affecting alternative polyadenylation. VIRMA has been reported to act as oncogenic factor in breast cancer and liver cancer.

## Notable Publications

Author	Pubmed ID	Journal	Application
Meihua Shan	38224863	Cancer Lett	WB

## Storage

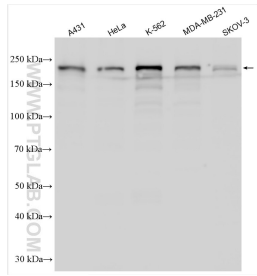
**Storage:**  
Store at -20°C. Stable for one year after shipment.  
**Storage Buffer:**  
PBS with 0.02% sodium azide and 50% glycerol pH 7.3.  
Aliquoting is unnecessary for -20°C storage

\*\*\* 20ul sizes contain 0.1% BSA

For technical support and original validation data for this product please contact:  
T: 1 (888) 4PTGLAB (1-888-478-4522) (toll free in USA), or 1(312) 455-8498 (outside USA)  
E: proteintech@ptglab.com  
W: ptglab.com

This product is exclusively available under Proteintech Group brand and is not available to purchase from any other manufacturer.

## Selected Validation Data



Various lysates were subjected to SDS PAGE followed by western blot with 30166-1-AP (KIAA1429 antibody) at dilution of 1:5000 incubated at room temperature for 1.5 hours.