

For Research Use Only

PELP1 Polyclonal antibody

Catalog Number: 30135-1-AP



Basic Information

Catalog Number: 30135-1-AP	GenBank Accession Number: BC069058	Purification Method: Antigen affinity purification
Size: 150ul , Concentration: 500 µg/ml by Nanodrop;	GeneID (NCBI): 27043	Recommended Dilutions: WB 1:5000-1:50000 IHC 1:50-1:500 IF 1:50-1:500
Source: Rabbit	Full Name: proline, glutamate and leucine rich protein 1	
Isotype: IgG	Calculated MW: 1130 aa, 120 kDa	
Immunogen Catalog Number: AG32720	Observed MW: 160 kDa	

Applications

Tested Applications: IF, IHC, WB, ELISA	Positive Controls: WB : HEK-293 cells, HeLa cells, MCF-7 cells, RAW 264.7 cells IHC : mouse testis tissue, human liver tissue IF : MCF-7 cells,
Species Specificity: Human, mouse	
Note-IHC: suggested antigen retrieval with TE buffer pH 9.0; (*) Alternatively, antigen retrieval may be performed with citrate buffer pH 6.0	

Background Information

PELP1 was first identified as a 160 kDa protein in a screen for Src homology 2 (SH2) domain-binding proteins. PELP1 is overexpressed in 60-80% of breast tumors and plays important roles in both ER genomic and non-genomic signaling. In vivo, PELP1 subcellular localization is primarily nuclear in normal breast tissue, but it is localized to the cytoplasm in about 40% of invasive breast tumors. In the nucleus, PELP1 interacts with a number of transcription factors. The proto-oncogenic functions of PELP1 involve different cellular processes including epigenetic modifications leading to ER transactivation and breast cancer progression. Furthermore, PELP1 activates kinase cascades in the cytoplasm such as MAPK activation via c-Src and PI3K signaling.

Storage

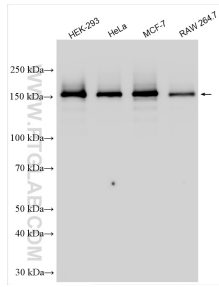
Storage:
Store at -20°C. Stable for one year after shipment.
Storage Buffer:
PBS with 0.02% sodium azide and 50% glycerol pH 7.3.
Aliquoting is unnecessary for -20°C storage

*** 20ul sizes contain 0.1% BSA

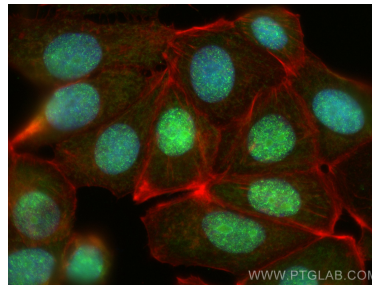
For technical support and original validation data for this product please contact:
T: 1 (888) 4PTGLAB (1-888-478-4522) (toll free in USA), or 1(312) 455-8498 (outside USA)
E: proteintech@ptglab.com
W: ptglab.com

This product is exclusively available under Proteintech Group brand and is not available to purchase from any other manufacturer.

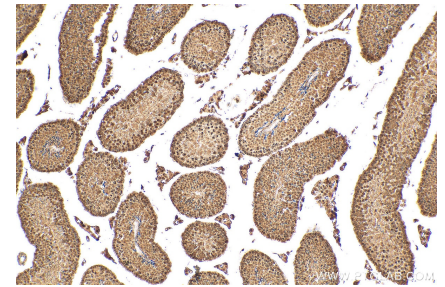
Selected Validation Data



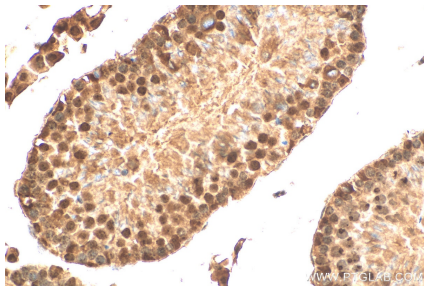
Various lysates were subjected to SDS PAGE followed by western blot with 30135-1-AP (PELP1 antibody) at dilution of 1:15000 incubated at room temperature for 1.5 hours.



Immunofluorescent analysis of (4% PFA) fixed MCF-7 cells using PELP1 antibody (30135-1-AP) at dilution of 1:200 and CoraLite@488-Conjugated AffiniPure Goat Anti-Rabbit IgG(H+L), CL594-Phalloidin (red).



Immunohistochemical analysis of paraffin-embedded mouse testis tissue slide using 30135-1-AP (PELP1 antibody) at dilution of 1:200 (under 10x lens). Heat mediated antigen retrieval with Tris-EDTA buffer (pH 9.0).



Immunohistochemical analysis of paraffin-embedded mouse testis tissue slide using 30135-1-AP (PELP1 antibody) at dilution of 1:200 (under 40x lens). Heat mediated antigen retrieval with Tris-EDTA buffer (pH 9.0).