

For Research Use Only

POLL Polyclonal antibody

Catalog Number: 29920-1-AP



Basic Information

Catalog Number: 29920-1-AP	GenBank Accession Number: BC068529	Purification Method: Antigen affinity purification
Size: 150ul , Concentration: 900 µg/ml by Nanodrop;	GeneID (NCBI): 27343	Recommended Dilutions: WB 1:1000-1:5000
Source: Rabbit	Full Name: polymerase (DNA directed), lambda	
Isotype: IgG	Calculated MW: 63 kDa	
Immunogen Catalog Number: AG31995	Observed MW: 63-70 kDa	

Applications

Tested Applications: WB, ELISA	Positive Controls: WB : L02 cells, HEK-293 cells, HepG2 cells, HEK-293T cells
Species Specificity: Human	

Background Information

POLL (DNA polymerase lambda) functions in DNA repair (PMID: 11457865, PMID: 19806195, PMID: 20693240, PMID: 30250067). POLL has 5-prime-deoxyribose-5-phosphate lyase activity and strand-displacement synthesis activity on gapped DNA substrates, indicating that POLL participates in short- and long-patch base excision repair. POLL is involved in base excision repair (BER) responsible for repair of lesions that give rise to abasic (AP) sites in DNA (PMID: 11457865, PMID: 19806195).

Storage

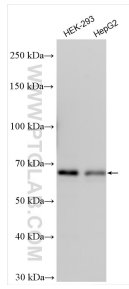
Storage:
Store at -20°C. Stable for one year after shipment.
Storage Buffer:
PBS with 0.02% sodium azide and 50% glycerol pH 7.3.
Aliquoting is unnecessary for -20°C storage

*** 20ul sizes contain 0.1% BSA

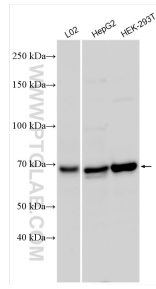
For technical support and original validation data for this product please contact:
T: 1 (888) 4PTGLAB (1-888-478-4522) (toll free in USA), or 1(312) 455-8498 (outside USA)
E: proteintech@ptglab.com
W: ptglab.com

This product is exclusively available under Proteintech Group brand and is not available to purchase from any other manufacturer.

Selected Validation Data



Various lysates were subjected to SDS PAGE followed by western blot with 29920-1-AP (POLL antibody) at dilution of 1:1500 incubated at room temperature for 1.5 hours.



Various lysates were subjected to SDS PAGE followed by western blot with 29920-1-AP (POLL antibody) at dilution of 1:2500 incubated at room temperature for 1.5 hours.