

For Research Use Only

SLC27A6 Polyclonal antibody

Catalog Number: 29802-1-AP



Basic Information

Catalog Number: 29802-1-AP	GenBank Accession Number: BC041945	Purification Method: Antigen affinity purification
Size: 150ul , Concentration: 900 µg/ml by Nanodrop;	GeneID (NCBI): 28965	Recommended Dilutions: WB 1:1000-1:8000
Source: Rabbit	Full Name: solute carrier family 27 (fatty acid transporter), member 6	
Isotype: IgG	Calculated MW: 70 kDa	
Immunogen Catalog Number: AG32179	Observed MW: 65-70 kDa	

Applications

Tested Applications: WB, ELISA	Positive Controls: WB : mouse liver tissue, rat liver tissue
Species Specificity: Human, mouse, rat	

Background Information

SLC27A6, also known as FATP6, ACSVL2, FACVL2, belongs to the ATP-dependent AMP-binding enzyme family. SLC27A6 mediates the import of long-chain fatty acids (LCFA) into the cell by facilitating their transport at the plasma membrane (PMID: 12556534). SLC27A6 plays a pivotal role in regulating available LCFA substrates from exogenous sources in tissues undergoing high levels of beta-oxidation. SLC27A6 is strongly expressed in heart and localizes to cardiac myocytes. SLC27A6 is expressed at moderate levels in placenta, testis, and adrenal glands (PMID: 12556534).

Storage

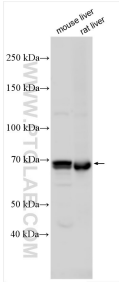
Storage:
Store at -20°C. Stable for one year after shipment.
Storage Buffer:
PBS with 0.02% sodium azide and 50% glycerol pH 7.3.
Aliquoting is unnecessary for -20°C storage

*** 20ul sizes contain 0.1% BSA

For technical support and original validation data for this product please contact:
T: 1 (888) 4PTGLAB (1-888-478-4522) (toll free in USA), or 1(312) 455-8498 (outside USA)
E: proteintech@ptglab.com
W: ptglab.com

This product is exclusively available under Proteintech Group brand and is not available to purchase from any other manufacturer.

Selected Validation Data



Various lysates were subjected to SDS PAGE followed by western blot with 29802-1-AP (SLC27A6 antibody) at dilution of 1:4000 incubated at room temperature for 1.5 hours.