

For Research Use Only

NHE1 Polyclonal antibody

Catalog Number: 29761-1-AP



Basic Information

Catalog Number: 29761-1-AP	GenBank Accession Number: NM_003047	Purification Method: Antigen affinity purification
Size: 150ul , Concentration: 700 µg/ml by Nanodrop;	GeneID (NCBI): 6548	Recommended Dilutions: WB 1:1000-1:4000 IHC 1:50-1:500
Source: Rabbit	Full Name: solute carrier family 9 (sodium/hydrogen exchanger), member 1	
Isotype: IgG	Calculated MW: 91 kDa	
Immunogen Catalog Number: AG31192	Observed MW: 90-100 kDa	

Applications

Tested Applications:

IHC, WB, ELISA

Species Specificity:

Human, mouse, rat

Note-IHC: suggested antigen retrieval with TE buffer pH 9.0; (*) Alternatively, antigen retrieval may be performed with citrate buffer pH 6.0

Positive Controls:

WB : mouse brain tissue, mouse heart tissue, rat brain tissue, rat heart tissue

IHC : human stomach tissue,

Background Information

NHE1, also named as SLC9A1, encodes an Na⁺/H⁺ antiporter that is a membrane-bound enzyme involved in regulating pH of vertebrate cells. NHE1 regulates a number of cell behaviors, including adhesion, shape determination, migration, and proliferation (PMID:11807182). It is inhibited by the non-specific diuretic drug amiloride and activated by growth factors, mitogens, neurotransmitters, tumor promoters, and others (PMID: 2846238). NHE1 is expressed in heart where it contributes to cardiomyocyte pH homeostasis (PMID: 12832126, PMID: 23709596).

Storage

Storage:

Store at -20°C. Stable for one year after shipment.

Storage Buffer:

PBS with 0.02% sodium azide and 50% glycerol pH 7.3.

Aliquoting is unnecessary for -20°C storage

*** 20ul sizes contain 0.1% BSA

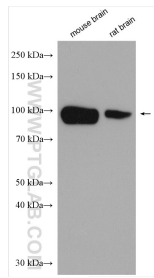
For technical support and original validation data for this product please contact:

T: 1 (888) 4PTGLAB (1-888-478-4522) (toll free in USA), or 1(312) 455-8498 (outside USA)

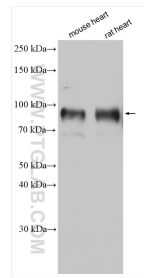
E: proteintech@ptglab.com
W: ptglab.com

This product is exclusively available under Proteintech Group brand and is not available to purchase from any other manufacturer.

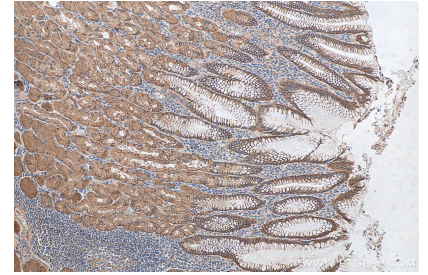
Selected Validation Data



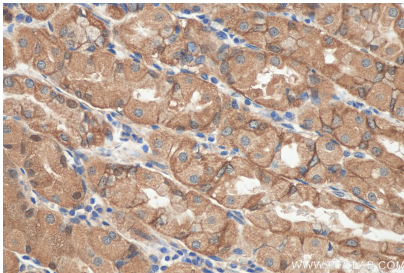
Various lysates were subjected to SDS PAGE followed by western blot with 29761-1-AP (NHE1 antibody) at dilution of 1:2000 incubated at room temperature for 1.5 hours.



Various lysates were subjected to SDS PAGE followed by western blot with 29761-1-AP (NHE1 antibody) at dilution of 1:1000 incubated at room temperature for 1.5 hours.



Immunohistochemical analysis of paraffin-embedded human stomach tissue slide using 29761-1-AP (NHE1 antibody) at dilution of 1:200 (under 10x lens).



Immunohistochemical analysis of paraffin-embedded human stomach tissue slide using 29761-1-AP (NHE1 antibody) at dilution of 1:200 (under 40x lens).