

For Research Use Only

Phospho-ATG4B (Ser383) Polyclonal antibody



Catalog Number: 29684-1-AP

Basic Information

Catalog Number: 29684-1-AP	GenBank Accession Number: BC000719	Purification Method: Antigen affinity purification
Size: 100ul , Concentration: 800 µg/ml by Nanodrop;	GeneID (NCBI): 23192	Recommended Dilutions: WB 1:500-1:2000
Source: Rabbit	Full Name: ATG4 autophagy related 4 homolog B (S. cerevisiae)	
Isotype: IgG	Calculated MW: 44 kDa	
	Observed MW: 44 kDa	

Applications

Tested Applications: WB, ELISA	Positive Controls: WB : λ phosphatase treated HeLa cells,
Species Specificity: Human	

Background Information

ATG4B stimulates autophagy by promoting autophagosome formation through reversible modification of ATG8. In humans, microtubule-associated protein 1 light chain, LC3B, is the best-characterized ATG8 isoform, and ATG4B, but not three other ATG4 isoforms, displays a highly selective preference toward LC3B. MST4 phosphorylates ATG4B at serine residue 383, which stimulates ATG4B activity and increases autophagic flux. (PMID: 29232556, PMID: 36056541)

Storage

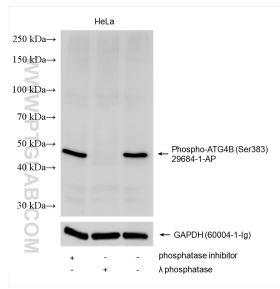
Storage:
Store at -20°C. Stable for one year after shipment.
Storage Buffer:
PBS with 0.02% sodium azide and 50% glycerol pH 7.3.
Aliquoting is unnecessary for -20°C storage

*** 20ul sizes contain 0.1% BSA

For technical support and original validation data for this product please contact:
T: 1 (888) 4PTGLAB (1-888-478-4522) (toll free in USA), or 1(312) 455-8498 (outside USA) E: proteintech@ptglab.com W: ptglab.com

This product is exclusively available under Proteintech Group brand and is not available to purchase from any other manufacturer.

Selected Validation Data



Non-treated HeLa, phosphatase inhibitor treated and λ phosphatase treated HeLa cells were subjected to SDS PAGE followed by western blot with 29684-1-AP (Phospho-ATG4B (Ser383) antibody) at dilution of 1:1000 incubated at room temperature for 1.5 hours. The membrane was stripped and re-blotted with GAPDH antibody as loading control.