

For Research Use Only

Phospho-INPPL1 (Tyr986/987) Polyclonal antibody

Catalog Number: 29574-1-AP



Basic Information

Catalog Number:

29574-1-AP

Size:

100ul, Concentration: 450 ug/ml by Nanodrop;

Source:

Rabbit

Isotype:

IgG

GenBank Accession Number:

BC140853

GeneID (NCBI):

3636

UNIPROT ID:

O15357

Full Name:

inositol polyphosphate phosphatase-like 1

Calculated MW:

1258 aa, 139 kDa

Observed MW:

150 kDa

Purification Method:

Antigen affinity purification

Recommended Dilutions:

WB 1:500-1:1000

Applications

Tested Applications:

WB, ELISA

Species Specificity:

Human, mouse

Positive Controls:

WB : UV treated HeLa cells, UV treated NIH/3T3 cells, HeLa cells

Background Information

Inositol polyphosphate phosphatase-like protein 1 (INPPL1) belongs to the inositol and phosphatidylinositol 5-phosphatase family, also known as SH2 domain-containing inositol 5'-phosphatase 2 (SHIP2), is ubiquitous in all organizations. SHIP2 is constitutively tyrosine-phosphorylated in chronic myeloid leukemia progenitor cells. In B cells, SHIP2 was most tyrosine phosphorylated after BCR and FC-γRIIB crosslinking and was associated with Shc, but not after BCR stimulation alone. It has also been shown that SHIP2 can be phosphorylated at Tyr-986 in COS-7 cells and Chinese hamster ovary cells overexpressing the insulin receptor. (PMID: 11349134)

Storage

Storage:

Store at -20°C. Stable for one year after shipment.

Storage Buffer:

PBS with 0.02% sodium azide and 50% glycerol pH 7.3.

Aliquoting is unnecessary for -20°C storage

*** 20ul sizes contain 0.1% BSA

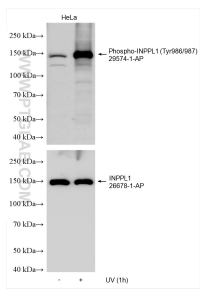
For technical support and original validation data for this product please contact:

T: 1 (888) 4PTGLAB (1-888-478-4522) (toll free in USA), or 1(312) 455-8498 (outside USA)

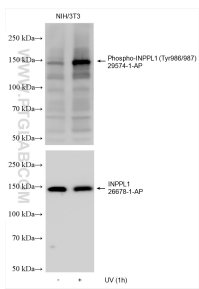
E: proteintech@ptglab.com
W: ptglab.com

This product is exclusively available under Proteintech Group brand and is not available to purchase from any other manufacturer.

Selected Validation Data



Non-treated and UV treated HeLa cells were subjected to SDS PAGE followed by western blot with 29574-1-AP (Phospho-INPPL1 (Tyr986/987) antibody) at dilution of 1:500 incubated at room temperature for 1.5 hours. The membrane was stripped and re-blotted with INPPL1 antibody (26678-1-AP) subsequently.



Non-treated and UV treated NIH/3T3 cells were subjected to SDS PAGE followed by western blot with 29574-1-AP (Phospho-INPPL1 (Tyr986/987) antibody) at dilution of 1:500 incubated at room temperature for 1.5 hours. The membrane was stripped and re-blotted with INPPL1 antibody (26678-1-AP) subsequently.