

For Research Use Only

AQP2 Polyclonal antibody

Catalog Number: 29386-1-AP



Basic Information

| | | |
|---|--|---|
| Catalog Number: 29386-1-AP | GenBank Accession Number: NM_000486 | Purification Method: Antigen affinity purification |
| Size: 150ul , Concentration: 1000 µg/ml by Nanodrop; | GeneID (NCBI): 359 | Recommended Dilutions: WB 1:500-1:2000 IHC 1:500-1:2000 IF 1:50-1:500 |
| Source: Rabbit | Full Name: aquaporin 2 (collecting duct) | |
| Isotype: IgG | Calculated MW: 29 kDa | |
| Immunogen Catalog Number: AG29931 | Observed MW: 28-29, 35-38 kDa | |

Applications

Tested Applications:

IF, IHC, WB, ELISA

Species Specificity:

Human, mouse

**Note-IHC: suggested antigen retrieval with
TE buffer pH 9.0; (*) Alternatively, antigen
retrieval may be performed with citrate
buffer pH 6.0**

Positive Controls:

WB : 37°C incubated mouse kidney tissue,

IHC : mouse kidney tissue, human kidney tissue

IF : mouse kidney tissue,

Background Information

AQP2 (Aquaporin2) is a water channel protein that is widely distributed among mammalian tissues and plays a major role in water homeostasis. AQP2 is mainly found in the apical cell membranes of the kidney's collecting duct cells and is critical for urinary concentration. AQP2 can be glycosylated and this antibody recognizes the 28-29 kDa non-glycosylated as well as the 35-40 kDa glycosylated forms of AQP2.

Storage

Storage:

Store at -20°C.

Storage Buffer:

PBS with 0.02% sodium azide and 50% glycerol pH 7.3.

Aliquoting is unnecessary for -20°C storage

*** 20ul sizes contain 0.1% BSA

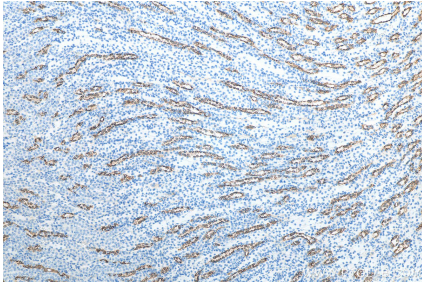
For technical support and original validation data for this product please contact:

T: 1 (888) 4PTGLAB (1-888-478-4522) (toll free
in USA), or 1(312) 455-8498 (outside USA)

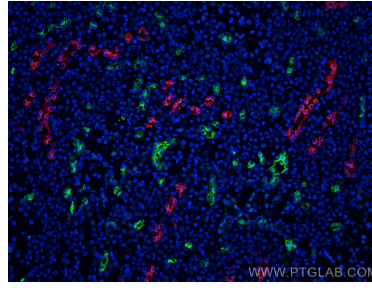
E: proteintech@ptglab.com
W: ptglab.com

This product is exclusively available under Proteintech Group brand and is not available to purchase from any other manufacturer.

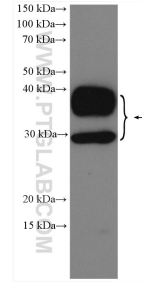
Selected Validation Data



Immunohistochemical analysis of paraffin-embedded mouse kidney tissue slide using 29386-1-AP (AQP2 antibody) at dilution of 1:1000 (under 10x lens). Heat mediated antigen retrieval with Tris-EDTA buffer (pH 9.0).



Immunofluorescent analysis of (4% PFA) fixed mouse kidney tissue using AQP2 antibody (29386-1-AP) at dilution of 1:200 and CoraLite® 594-Conjugated AffiniPure Goat Anti-Rabbit IgG(H+L), AQP1 antibody (66805-1-Ig, Clone: 2E5D6, green).



37°C incubated mouse kidney tissue were subjected to SDS PAGE followed by western blot with 29386-1-AP (AQP2 antibody) at dilution of 1:1000 incubated at room temperature for 1.5 hours.