

For Research Use Only

INPP5E Polyclonal antibody

Catalog Number: 29353-1-AP



Basic Information

Catalog Number: 29353-1-AP	GenBank Accession Number: BC028032	Purification Method: Antigen affinity purification
Size: 150ul , Concentration: 500 µg/ml by Nanodrop;	GeneID (NCBI): 56623	Recommended Dilutions: WB 1:500-1:3000 IF 1:50-1:500
Source: Rabbit	Full Name: inositol polyphosphate-5-phosphatase, 72 kDa	
Isotype: IgG	Calculated MW: 644 aa, 70 kDa	
Immunogen Catalog Number: AG30305	Observed MW: 70 kDa	

Applications

Tested Applications: IF, WB, ELISA	Positive Controls:
Species Specificity: Human, mouse, rat	WB : HEK-293 cells, mouse testis tissue, rat testis tissue IF : ARPE-19 cells,

Background Information

Storage

Storage:
Store at -20°C. Stable for one year after shipment.
Storage Buffer:
PBS with 0.02% sodium azide and 50% glycerol pH 7.3.
Aliquoting is unnecessary for -20°C storage

*** 20ul sizes contain 0.1% BSA

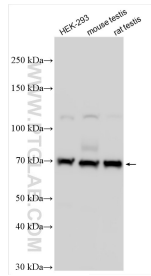
For technical support and original validation data for this product please contact:

T: 1 (888) 4PTGLAB (1-888-478-4522) (toll free in USA), or 1(312) 455-8498 (outside USA)

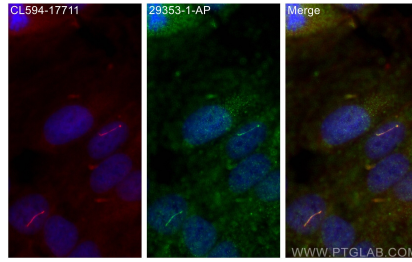
E: proteintech@ptglab.com
W: ptglab.com

This product is exclusively available under Proteintech Group brand and is not available to purchase from any other manufacturer.

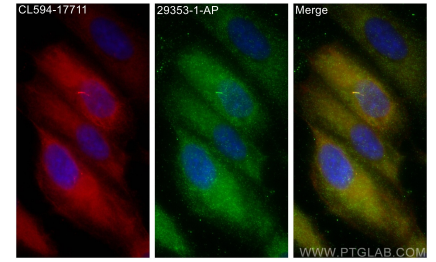
Selected Validation Data



Various lysates were subjected to SDS PAGE followed by western blot with 29353-1-AP (INPP5E antibody) at dilution of 1:1500 incubated at room temperature for 1.5 hours.



Immunofluorescent analysis of (4% PFA) fixed ARPE-19 cells using INPP5E antibody (29353-1-AP) at dilution of 1:200 and CoraLite®488-Conjugated AffiniPure Goat Anti-Rabbit IgG(H+L).



Immunofluorescent analysis of (-20°C Methanol) fixed ARPE-19 cells using INPP5E antibody (29353-1-AP) at dilution of 1:200 and CoraLite®488-Conjugated AffiniPure Goat Anti-Rabbit IgG(H+L).