

For Research Use Only

METTL3 Polyclonal antibody

Catalog Number: 29314-1-AP



Basic Information

Catalog Number: 29314-1-AP	GenBank Accession Number: BC001650	Purification Method: Antigen affinity purification
Size: 150ul , Concentration: 300 µg/ml by Nanodrop;	GeneID (NCBI): 56339	Recommended Dilutions: WB 1:500-1:3000
Source: Rabbit	Full Name: methyltransferase like 3	
Isotype: IgG	Calculated MW: 64 kDa	
Immunogen Catalog Number: AG30638	Observed MW: 65-70 kDa	

Applications

Tested Applications: WB, ELISA	Positive Controls: WB : HeLa cells, K-562 cells, MCF-7 cells
Species Specificity: Human	

Background Information

METTL3 is a key S-adenosyl-L-methionine-binding subunit, which is a component of a complex multicomponent enzyme that catalyzes the methylation of internal adenosine residues in eukaryotic mRNA, forming N6-methyladenosine. It contains 2 putative nuclear localization signals and 2 consensus methylation motifs. The calculated molecular weight of METTL3 is 64 kDa, but modified METTL3 is about 65-70 kDa.

Storage

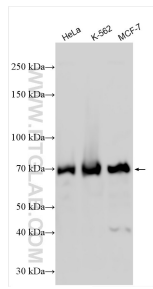
Storage:
Store at -20°C. Stable for one year after shipment.
Storage Buffer:
PBS with 0.02% sodium azide and 50% glycerol pH 7.3.
Aliquoting is unnecessary for -20°C storage

*** 20ul sizes contain 0.1% BSA

For technical support and original validation data for this product please contact:
T: 1 (888) 4PTGLAB (1-888-478-4522) (toll free in USA), or 1(312) 455-8498 (outside USA) E: proteintech@ptglab.com W: ptglab.com

This product is exclusively available under Proteintech Group brand and is not available to purchase from any other manufacturer.

Selected Validation Data



Various lysates were subjected to SDS PAGE followed by western blot with 29314-1-AP (METTL3 antibody) at dilution of 1:1500 incubated at room temperature for 1.5 hours.