

For Research Use Only

# GRB10 Polyclonal antibody

Catalog Number: 28872-1-AP



## Basic Information

|   |  |  |
|---|--|--|
| <b>Catalog Number:</b><br>28872-1-AP                          | <b>GenBank Accession Number:</b><br>BC024285                 | <b>Purification Method:</b><br>Antigen affinity purification         |
| <b>Size:</b><br>150ul , Concentration: 300 µg/ml by Nanodrop; | <b>GeneID (NCBI):</b><br>2887                                | <b>Recommended Dilutions:</b><br>WB 1:500-1:1000<br>IHC 1:250-1:1000 |
| <b>Source:</b><br>Rabbit                                      | <b>Full Name:</b><br>growth factor receptor-bound protein 10 |  |
| <b>Isotype:</b><br>IgG  | <b>Calculated MW:</b><br>536aa,61 kDa; 594aa,67 kDa          |  |
|   | <b>Observed MW:</b><br>60-70 kDa                             |  |

## Applications

### Tested Applications:

IHC, WB, ELISA

### Species Specificity:

Human, Mouse

**Note-IHC: suggested antigen retrieval with TE buffer pH 9.0; (\*) Alternatively, antigen retrieval may be performed with citrate buffer pH 6.0**

### Positive Controls:

WB : BxPC-3 cells, HepG2 cells, mouse brain tissue, mouse pancreas tissue

IHC : human liver tissue,

## Background Information

GRB10 is an adapter protein that modulates the coupling of a number of cell surface receptor kinases with specific signaling pathways. GRB10 has three consensus domains including pleckstrin homology (PH) domain, SH2/SH3 domain, and Ras-associating domain. By binding to kinases, GRB10 suppresses signals from activated receptors tyrosine kinases, including INSR and IGF1R. It may play a role in mediating ubiquitination of INSR, leading to proteasomal degradation. GRB10 has 4 isoforms with the molecular mass of 60-70 kDa, which are produced by alternative splicing.

## Storage

### Storage:

Store at -20°C. Stable for one year after shipment.

### Storage Buffer:

PBS with 0.02% sodium azide and 50% glycerol pH 7.3.

Aliquoting is unnecessary for -20°C storage

\*\*\* 20ul sizes contain 0.1% BSA

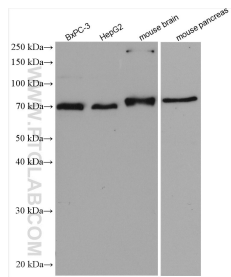
For technical support and original validation data for this product please contact:

T: 1 (888) 4PTGLAB (1-888-478-4522) (toll free in USA), or 1(312) 455-8498 (outside USA)

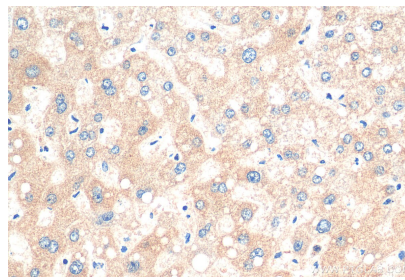
E: proteintech@ptglab.com  
W: ptglab.com

This product is exclusively available under Proteintech Group brand and is not available to purchase from any other manufacturer.

## Selected Validation Data



Various lysates were subjected to SDS PAGE followed by western blot with 28872-1-AP (GRB10 antibody) at dilution of 1:500 incubated at room temperature for 1.5 hours.



Immunohistochemical analysis of paraffin-embedded human liver tissue slide using 28872-1-AP (GRB10 antibody) at dilution of 1:500 (under 40x lens). Heat mediated antigen retrieval with Tris-EDTA buffer (pH 9.0).