

For Research Use Only

# SLC7A5 Polyclonal antibody

Catalog Number: 28670-1-AP

Featured Product

5 Publications



## Basic Information

### Catalog Number:

28670-1-AP

### Size:

150ul, Concentration: 900 µg/ml by Nanodrop;

### Source:

Rabbit

### Isotype:

IgG

### Immunogen Catalog Number:

AG29164

### GenBank Accession Number:

BC039692

### GeneID (NCBI):

8140

### UNIPROT ID:

Q01650

### Full Name:

solute carrier family 7 (cationic amino acid transporter, y+ system), member 5

### Calculated MW:

507 aa, 55 kDa

### Observed MW:

35-40 kDa

### Purification Method:

Antigen affinity purification

### Recommended Dilutions:

WB 1:2000-1:12000

IHC 1:50-1:500

IF 1:50-1:500

## Applications

### Tested Applications:

WB, IF, IHC, ELISA

### Cited Applications:

WB, IHC

### Species Specificity:

Human

### Cited Species:

human, mouse

### Positive Controls:

WB : A549 cells, MCF-7 cells, HeLa cells, HepG2 cells, MKN-45 cells, SW480 cells

IHC : human lung cancer tissue, human placenta tissue, human stomach cancer tissue

IF : HT-29 cells,

**Note-IHC: suggested antigen retrieval with TE buffer pH 9.0; (\*) Alternatively, antigen retrieval may be performed with citrate buffer pH 6.0**

## Notable Publications

Author	Pubmed ID	Journal	Application
Daqi Jia	36505791	Front Oncol	IHC, WB
Dennis J Hsu	36608131	Sci Adv	WB
Qiang Ma	35986300	J Exp Clin Cancer Res	WB

## Storage

### Storage:

Store at -20°C. Stable for one year after shipment.

### Storage Buffer:

PBS with 0.02% sodium azide and 50% glycerol pH 7.3.

Aliquoting is unnecessary for -20°C storage

\*\*\* 20ul sizes contain 0.1% BSA

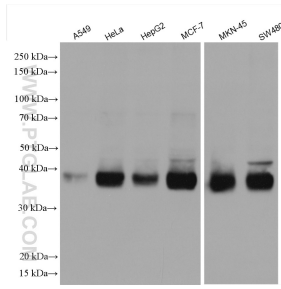
For technical support and original validation data for this product please contact:

T: 1 (888) 4PTGLAB (1-888-478-4522) (toll free in USA), or 1(312) 455-8498 (outside USA)

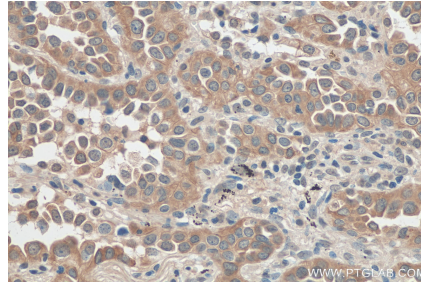
E: [proteintech@ptglab.com](mailto:proteintech@ptglab.com)  
W: [ptglab.com](http://ptglab.com)

This product is exclusively available under Proteintech Group brand and is not available to purchase from any other manufacturer.

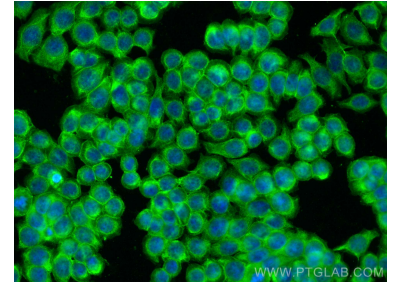
## Selected Validation Data



Various lysates were subjected to SDS PAGE followed by western blot with 28670-1-AP (SLC7A5 antibody) at dilution of 1:6000 incubated at room temperature for 1.5 hours.



Immunohistochemical analysis of paraffin-embedded human lung cancer tissue slide using 28670-1-AP (SLC7A5 antibody) at dilution of 1:200 (under 40x Lens). Heat mediated antigen retrieval with Tris-EDTA buffer (pH 9.0).



Immunofluorescent analysis of (-20°C Ethanol) fixed HT-29 cells using SLC7A5 antibody (28670-1-AP) at dilution of 1:200 and CoraLite®488-Conjugated AffiniPure Goat Anti-Rabbit IgG(H+L).