

For Research Use Only

LPL Polyclonal antibody

Catalog Number: 28602-1-AP

1 Publications



Basic Information

Catalog Number: 28602-1-AP	GenBank Accession Number: BC011353	Purification Method: Antigen affinity purification
Size: 150ul , Concentration: 800 µg/ml by Nanodrop;	GeneID (NCBI): 4023	Recommended Dilutions: WB 1:1000-1:6000 IHC 1:500-1:2000
Source: Rabbit	Full Name: lipoprotein lipase	
Isotype: IgG	Calculated MW: 475 aa, 53 kDa	
	Observed MW: 55 kDa	

Applications

Tested Applications: IHC, WB, ELISA	Positive Controls: WB : HeLa cells, IHC : mouse brown adipose tissue,
Cited Applications: IHC, WB	
Species Specificity: Human, mouse	
Cited Species: human, mouse	
Note-IHC: suggested antigen retrieval with TE buffer pH 9.0; (*) Alternatively, antigen retrieval may be performed with citrate buffer pH 6.0	

Background Information

Lipoprotein lipase (LPL) is a key enzyme in lipid and lipoprotein metabolism. The canonical role of LPL involves the hydrolysis of triglyceride-rich lipoproteins for the provision of FFAs to metabolic tissues. LPL is highly expressed in adipocytes and myocytes as well as macrophages. Its protein level and activity are tightly regulated by multiple mechanisms in response to the metabolic state and energy demands of the cell . (PMID: 33277156, PMID: 33172164)

Notable Publications

Author	Pubmed ID	Journal	Application
Wei Chang	38339301	Cancers (Basel)	WB,IHC

Storage

Storage:
Store at -20°C. Stable for one year after shipment.
Storage Buffer:
PBS with 0.02% sodium azide and 50% glycerol pH 7.3.
Aliquoting is unnecessary for -20°C storage

*** 20ul sizes contain 0.1% BSA

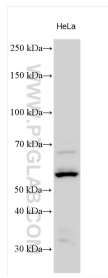
For technical support and original validation data for this product please contact:

T: 1 (888) 4PTGLAB (1-888-478-4522) (toll free in USA), or 1(312) 455-8498 (outside USA)

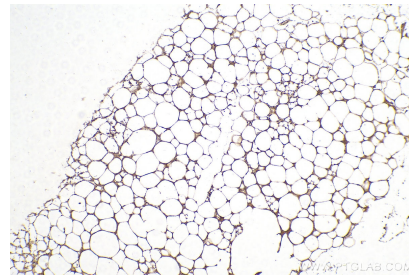
E: proteintech@ptglab.com
W: ptglab.com

This product is exclusively available under Proteintech Group brand and is not available to purchase from any other manufacturer.

Selected Validation Data



HeLa cells were subjected to SDS PAGE followed by western blot with 28602-1-AP (LPL antibody) at dilution of 1:3000 incubated at room temperature for 1.5 hours.



Immunohistochemical analysis of paraffin-embedded mouse brown adipose tissue slide using 28602-1-AP (LPL antibody) at dilution of 1:1000 (under 10x lens). Heat mediated antigen retrieval with Tris-EDTA buffer (pH 9.0).