

For Research Use Only

PGC Polyclonal antibody

Catalog Number: 28532-1-AP **2 Publications**



Basic Information

Catalog Number: 28532-1-AP	GenBank Accession Number: BC073740	Purification Method: Antigen affinity purification
Size: 150ul , Concentration: 600 µg/ml by Nanodrop;	GeneID (NCBI): 5225	Recommended Dilutions: WB 1:5000-1:50000 IHC 1:50-1:500
Source: Rabbit	Full Name: progastricsin (pepsinogen C)	
Isotype: IgG	Calculated MW: 388 aa, 42 kDa	
Immunogen Catalog Number: AG29347		

Applications

Tested Applications: IHC, WB, ELISA	Positive Controls:
Cited Applications: WB	WB : mouse stomach tissue, rat stomach tissue
Species Specificity: Human, MOUSE, rat	IHC : human stomach cancer tissue,
Cited Species: human, mouse	

Note-IHC: suggested antigen retrieval with TE buffer pH 9.0; (*) Alternatively, antigen retrieval may be performed with citrate buffer pH 6.0

Background Information

Pepsinogen II also known as progastricsin or PGC(pepsinogen C), is an aspartic protease expressed primarily in gastric chief cells and is a novel marker of type 2 cells with advantages over many of the current markers used to identify type 2 cells in the developing lung(PMID:14578117). It is involved in proteolysis and peptidolysis. This protein has 2 isoforms produced by alternative splicing.

Notable Publications

Author	Pubmed ID	Journal	Application
Mei-Fei Wu	36476627	Cell Biosci	WB
Hua-Chuan Zheng	37247123	Transgenic Res	WB

Storage

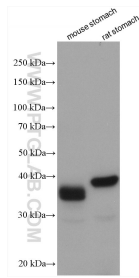
Storage:
Store at -20°C. Stable for one year after shipment.
Storage Buffer:
PBS with 0.02% sodium azide and 50% glycerol pH 7.3.
Aliquoting is unnecessary for -20°C storage

*** 20ul sizes contain 0.1% BSA

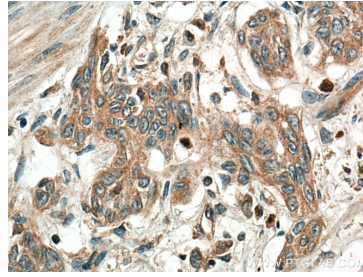
For technical support and original validation data for this product please contact:
T: 1 (888) 4PTGLAB (1-888-478-4522) (toll free in USA), or 1(312) 455-8498 (outside USA)
E: proteintech@ptglab.com
W: ptglab.com

This product is exclusively available under Proteintech Group brand and is not available to purchase from any other manufacturer.

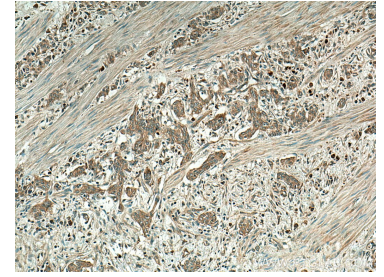
Selected Validation Data



Various lysates were subjected to SDS PAGE followed by western blot with 28532-1-AP (PGC antibody) at dilution of 1:10000 incubated at room temperature for 1.5 hours.



Immunohistochemical analysis of paraffin-embedded human stomach cancer tissue slide using 28532-1-AP (PGC antibody) at dilution of 1:200 (under 40x lens). Heat mediated antigen retrieval with Tris-EDTA buffer (pH 9.0).



Immunohistochemical analysis of paraffin-embedded human stomach cancer tissue slide using 28532-1-AP (PGC antibody) at dilution of 1:200 (under 10x lens). Heat mediated antigen retrieval with Tris-EDTA buffer (pH 9.0).