

For Research Use Only

FUNDC1 Polyclonal antibody

Catalog Number: 28519-1-AP

Featured Product

2 Publications



Basic Information

Catalog Number:

28519-1-AP

Size:

150ul, Concentration: 600 µg/ml by Nanodrop;

Source:

Rabbit

Isotype:

IgG

Immunogen Catalog Number:

AG29358

GenBank Accession Number:

BC042813

GeneID (NCBI):

139341

UNIPROT ID:

Q8IVP5

Full Name:

FUN14 domain containing 1

Calculated MW:

155 aa, 17 kDa

Observed MW:

17 kDa

Purification Method:

Antigen affinity purification

Recommended Dilutions:

WB 1:5000-1:20000

Applications

Tested Applications:

WB, ELISA

Cited Applications:

WB

Species Specificity:

Human, mouse, rat

Cited Species:

human, mouse

Positive Controls:

WB : RAW 264.7 cells, RAW 264, .7 cells, mouse brain tissue, mouse liver tissue, rat brain tissue, rat liver tissue, C6 cells

Background Information

FUNDC1 is a novel mitochondrial-associated membrane (MAM) protein, enriched at the MAM by interacting with the ER resident protein CANX (calnexin) under hypoxia. As mitophagy proceeds, it dissociates from CANX and preferably recruits DNM1L/DRP1 to drive mitochondrial fission in response to hypoxic stress.

Notable Publications

Author	Pubmed ID	Journal	Application
Limin Shi	38469619	Clin Sci (Lond)	WB
Hong Chen	38320454	Redox Biol	WB

Storage

Storage:

Store at -20°C. Stable for one year after shipment.

Storage Buffer:

PBS with 0.02% sodium azide and 50% glycerol pH 7.3.

Aliquoting is unnecessary for -20°C storage

*** 20ul sizes contain 0.1% BSA

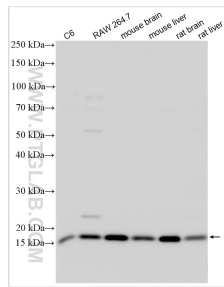
For technical support and original validation data for this product please contact:

T: 1 (888) 4PTGLAB (1-888-478-4522) (toll free in USA), or 1(312) 455-8498 (outside USA)

E: proteintech@ptglab.com
W: ptglab.com

This product is exclusively available under Proteintech Group brand and is not available to purchase from any other manufacturer.

Selected Validation Data



Various lysates were subjected to SDS PAGE followed by western blot with 28519-1-AP (FUNDC1 antibody) at dilution of 1:40000 incubated at room temperature for 1.5 hours.