

For Research Use Only

MTMR14 Polyclonal antibody

Catalog Number: 28496-1-AP



Basic Information

Catalog Number: 28496-1-AP	GenBank Accession Number: BC050626	Purification Method: Antigen affinity purification
Size: 150ul , Concentration: 600 µg/ml by Nanodrop;	GeneID (NCBI): 64419	Recommended Dilutions: WB 1:500-1:3000
Source: Rabbit	Full Name: myotubularin related protein 14	
Isotype: IgG	Calculated MW: 72 kDa	
Immunogen Catalog Number: AG29627	Observed MW: 60-72 kDa	

Applications

Tested Applications: WB, ELISA	Positive Controls: WB : MCF-7 cells, Neuro-2a cells
Species Specificity: Human, mouse	

Background Information

MTMR14, also known as Jumpy, belongs to the MTM1/MTMRs family which has 15 members that divided into two subgroup: catalytically inactive and active. MTMR14 is a catalytically active member possessing an active phosphatase domain, that specifically dephosphorylates PI3P and phosphatidylinositol (3,5)-bisphosphate (PI3,5P2) at position 3 on inositol ring. A remarkable feature of the MTM1/MTMRs family is the association between a catalytically inactive member and a catalytically active member, which plays an important regulatory role. MTMR14 has 3 isoforms with molecular weight of 60-72 kDa, and also can be detected as a higher molecular weight due to the heterodimerization with other MTMR members.

Storage

Storage:
Store at -20°C. Stable for one year after shipment.
Storage Buffer:
PBS with 0.02% sodium azide and 50% glycerol pH 7.3.
Aliquoting is unnecessary for -20°C storage

*** 20ul sizes contain 0.1% BSA

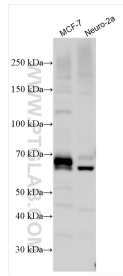
For technical support and original validation data for this product please contact:

T: 1 (888) 4PTGLAB (1-888-478-4522) (toll free in USA), or 1(312) 455-8498 (outside USA)

E: proteintech@ptglab.com
W: ptglab.com

This product is exclusively available under Proteintech Group brand and is not available to purchase from any other manufacturer.

Selected Validation Data



Various lysates were subjected to SDS PAGE followed by western blot with 28496-1-AP (MTMR14 antibody) at dilution of 1:1500 incubated at room temperature for 1.5 hours.