

For Research Use Only

# FSTL3 Polyclonal antibody

Catalog Number: 28218-1-AP

Featured Product



## Basic Information

<b>Catalog Number:</b> 28218-1-AP	<b>GenBank Accession Number:</b> BC005839	<b>Purification Method:</b> Antigen affinity purification
<b>Size:</b> 150ul , Concentration: 600 µg/ml by Nanodrop;	<b>GeneID (NCBI):</b> 10272	<b>Recommended Dilutions:</b> WB 1:500-1:1000 IHC 1:250-1:1000
<b>Source:</b> Rabbit	<b>Full Name:</b> follistatin-like 3 (secreted glycoprotein)	
<b>Isotype:</b> IgG	<b>Calculated MW:</b> 263 aa, 28 kDa	
<b>Immunogen Catalog Number:</b> AG27626	<b>Observed MW:</b> 28-33 kDa	

## Applications

### Tested Applications:

IHC, WB, ELISA

### Species Specificity:

Human, mouse, rat

**Note-IHC: suggested antigen retrieval with TE buffer pH 9.0; (\*) Alternatively, antigen retrieval may be performed with citrate buffer pH 6.0**

### Positive Controls:

WB : human placenta tissue, HeLa cells

IHC : human urothelial carcinoma tissue, mouse kidney tissue, rat kidney tissue, rat testis tissue

## Background Information

Follistatin-like 3 (FSTL3) is a highly conserved 27-39 kDa monomeric glycoprotein belonging to the follistatin protein family and it is primarily expressed in the placenta as well as in the testis, heart, adipose tissue, and pancreas. It is an extracellular inhibitor of the transforming growth factor beta (TGF-β) family ligands, including activin, myostatin, and bone morphogenetic proteins.

## Storage

### Storage:

Store at -20°C. Stable for one year after shipment.

### Storage Buffer:

PBS with 0.02% sodium azide and 50% glycerol pH 7.3.

Aliquoting is unnecessary for -20°C storage

\*\*\* 20ul sizes contain 0.1% BSA

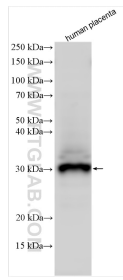
For technical support and original validation data for this product please contact:

T: 1 (888) 4PTGLAB (1-888-478-4522) (toll free in USA), or 1(312) 455-8498 (outside USA)

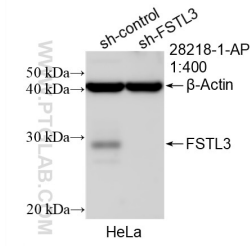
E: proteintech@ptglab.com  
W: ptglab.com

This product is exclusively available under Proteintech Group brand and is not available to purchase from any other manufacturer.

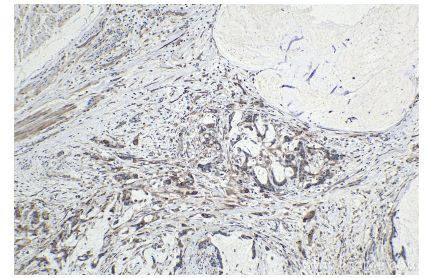
## Selected Validation Data



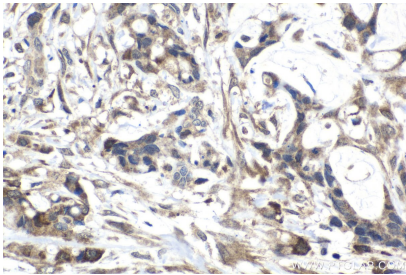
Human placenta tissues were subjected to SDS PAGE followed by western blot with 28218-1-AP (FSTL3 antibody) at dilution of 1:800 incubated at room temperature for 1.5 hours.



WB result of FSTL3 antibody (28218-1-AP; 1:400; incubated at room temperature for 1.5 hours) with sh-Control and sh-FSTL3 transfected HeLa cells.



Immunohistochemical analysis of paraffin-embedded human urothelial carcinoma tissue slide using 28218-1-AP (FSTL3 antibody) at dilution of 1:500 (under 10x lens). Heat mediated antigen retrieval with Tris-EDTA buffer (pH 9.0).



Immunohistochemical analysis of paraffin-embedded human urothelial carcinoma tissue slide using 28218-1-AP (FSTL3 antibody) at dilution of 1:500 (under 40x lens). Heat mediated antigen retrieval with Tris-EDTA buffer (pH 9.0).