

For Research Use Only

IRE1; ERN1 Polyclonal antibody

Catalog Number: 28164-1-AP



Basic Information

Catalog Number: 28164-1-AP	GenBank Accession Number: BC130405	Purification Method: Antigen affinity purification
Size: 150ul , Concentration: 550 µg/ml by Nanodrop;	GeneID (NCBI): 2081	Recommended Dilutions: WB 1:1000-1:4000
Source: Rabbit	Full Name: endoplasmic reticulum to nucleus signaling 1	
Isotype: IgG	Calculated MW: 977 aa, 110 kDa	
Immunogen Catalog Number: AG27375	Observed MW: 130 kDa	

Applications

Tested Applications: WB, ELISA	Positive Controls: WB : PC-3 cells,
Species Specificity: Human, mouse	

Background Information

Inositol-requiring enzyme 1 (IRE1) is an ER transmembrane sensor that activates the UPR to maintain the ER and cellular function. Although mammalian IRE1 promotes cell survival, it can initiate apoptosis via decay of antiapoptotic miRNAs. IRE1 contains a ribonuclease domain in its cytoplasmic region which initiates splicing reaction by direct cleavage of XBP1 mRNA at the two stem loop structures. IRE1 plays instrumental protumoral roles in several cancers, and high IRE1 activity has been associated with poorer prognoses. (PMID: 23880584, PMID: 32861679, PMID: 31875595)

Storage

Storage:
Store at -20°C. Stable for one year after shipment.
Storage Buffer:
PBS with 0.02% sodium azide and 50% glycerol pH 7.3.
Aliquoting is unnecessary for -20°C storage

*** 20ul sizes contain 0.1% BSA

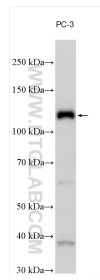
For technical support and original validation data for this product please contact:

T: 1 (888) 4PTGLAB (1-888-478-4522) (toll free in USA), or 1(312) 455-8498 (outside USA)

E: proteintech@ptglab.com
W: ptglab.com

This product is exclusively available under Proteintech Group brand and is not available to purchase from any other manufacturer.

Selected Validation Data



PC-3 cells were subjected to SDS PAGE followed by western blot with 28164-1-AP (IRE1; ERN1 antibody) at dilution of 1:2000 incubated at room temperature for 1.5 hours.