

For Research Use Only

# L3MBTL3 Polyclonal antibody

Catalog Number: 28112-1-AP



## Basic Information

<b>Catalog Number:</b> 28112-1-AP	<b>GenBank Accession Number:</b> BC060845	<b>Purification Method:</b> Antigen affinity purification
<b>Size:</b> 150ul , Concentration: 2000 µg/ml by Nanodrop;	<b>GeneID (NCBI):</b> 84456	<b>Recommended Dilutions:</b> WB 1:2000-1:10000 IHC 1:50-1:500 IF 1:50-1:500
<b>Source:</b> Rabbit	<b>Full Name:</b> l(3)mbt-like 3 (Drosophila)	
<b>Isotype:</b> IgG	<b>Calculated MW:</b> 88 aa, 3 kDa	
<b>Immunogen Catalog Number:</b> AG27136	<b>Observed MW:</b> 88 kDa	

## Applications

<b>Tested Applications:</b> IF, IHC, WB, ELISA	<b>Positive Controls:</b> WB : HEK-293T cells, HeLa cells, Jurkat cells IHC : mouse cerebellum tissue, IF : U2OS cells,
<b>Species Specificity:</b> Human	
<b>Note-IHC: suggested antigen retrieval with TE buffer pH 9.0; (*) Alternatively, antigen retrieval may be performed with citrate buffer pH 6.0</b>	

## Background Information

L3MBTL3, also named as MBT1 and KIAA1798, belongs to the Malignant brain tumor (MBT) family. L3MBTL3 can bind to methyl lysine in histone, further affecting the transcription and its abnormal regulation associated with many diseases (PMID: 34373992). Additionally, researches have shown that L3MBTL3 plays a role in medulloblastoma formation and normal hematopoiesis in humans (PMID: 26317848). L3MBTL3 has 2 isoforms with the molecular mass of 86 and 88 kDa.

## Storage

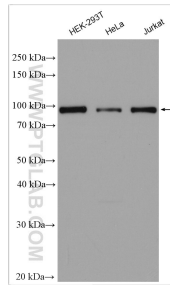
**Storage:**  
Store at -20°C. Stable for one year after shipment.  
**Storage Buffer:**  
PBS with 0.02% sodium azide and 50% glycerol pH 7.3.  
Aliquoting is unnecessary for -20°C storage

\*\*\* 20ul sizes contain 0.1% BSA

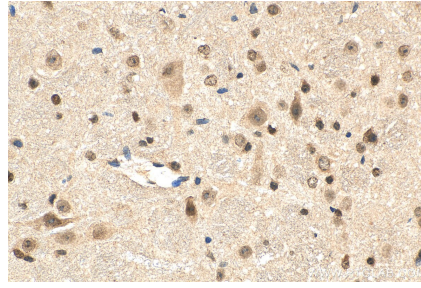
For technical support and original validation data for this product please contact:  
T: 1 (888) 4PTGLAB (1-888-478-4522) (toll free in USA), or 1(312) 455-8498 (outside USA)      E: proteintech@ptglab.com  
W: ptglab.com

This product is exclusively available under Proteintech Group brand and is not available to purchase from any other manufacturer.

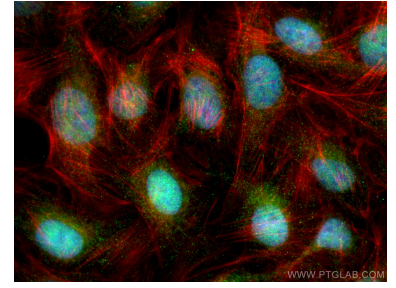
## Selected Validation Data



Various lysates were subjected to SDS PAGE followed by western blot with 28112-1-AP (L3MBTL3 antibody) at dilution of 1:5000 incubated at room temperature for 1.5 hours.



Immunohistochemical analysis of paraffin-embedded mouse cerebellum tissue slide using 28112-1-AP (L3MBTL3 antibody) at dilution of 1:200 (under 40x lens). Heat mediated antigen retrieval with Tris-EDTA buffer (pH 9.0).



Immunofluorescent analysis of (4% PFA) fixed U2OS cells using L3MBTL3 antibody (28112-1-AP) at dilution of 1:200 and CoraLite@488-Conjugated AffiniPure Goat Anti-Rabbit IgG(H+L), CL594-Phalloidin (red).