

For Research Use Only

RanBP1 Polyclonal antibody

Catalog Number: 27804-1-AP **2 Publications**



Basic Information

Catalog Number: 27804-1-AP	GenBank Accession Number: GeneID (NCBI): 5902	Purification Method: Antigen affinity purification
Size: 150ul, Concentration: 1000 µg/ml by Nanodrop and 533 µg/ml by Bradford method using BSA as the standard;	Full Name: RAN binding protein 1	Recommended Dilutions: WB 1:1000-1:6000 IHC 1:400-1:1600 IF 1:50-1:500
Source: Rabbit	Observed MW: 28 kDa	
Isotype: IgG		
Immunogen Catalog Number: AG25714		

Applications

Tested Applications: IF, IHC, WB, ELISA	Positive Controls: WB: mouse testis tissue, HEK-293 cells, mouse brain tissue, fetal human brain tissue, HeLa cells, RAW 264.7 cells, NIH/3T3 cells, 3T3-L1 cells
Cited Applications: IF, WB	IHC: mouse testis tissue, IF: NIH/3T3 cells, HeLa cells
Species Specificity: Human, mouse	
Cited Species: human	

Note-IHC: suggested antigen retrieval with TE buffer pH 9.0; (*) Alternatively, antigen retrieval may be performed with citrate buffer pH 6.0

Background Information

RanBP1 (Ran-binding protein 1) belongs to the RANBP1 family. RanBP1 plays a role in RAN-dependent nucleocytoplasmic transport. It alleviates the TNPO1-dependent inhibition of RAN GTPase activity and mediates the dissociation of RAN from proteins involved in transport into the nucleus. And RanBP1 induces a conformation change in the complex formed by XPO1 and RAN that triggers the release of the nuclear export signal of cargo proteins (PMID:20485264). RanBP1 promotes dissociation of RAN from a complex with KPNA2 and CSE1L. It is required for normal mitotic spindle assembly and normal progress through mitosis via its effect on RAN (PMID:17671426). Also, RanBP1 inhibits RCC1-dependent exchange of RAN-bound GDP by GTP (PMID:7882974, PMID:7616957).

Notable Publications

Author	Pubmed ID	Journal	Application
Yuqin Lei	33974430	J Med Chem	IF
Yuling Li	31021318	Elife	WB

Storage

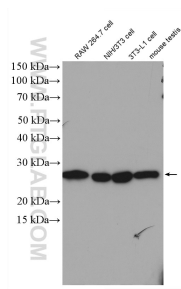
Storage:
Store at -20°C. Stable for one year after shipment.
Storage Buffer:
PBS with 0.02% sodium azide and 50% glycerol pH 7.3.
Aliquoting is unnecessary for -20°C storage

*** 20ul sizes contain 0.1% BSA

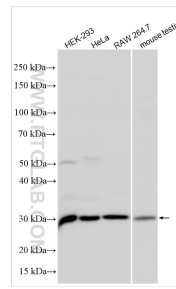
For technical support and original validation data for this product please contact:
T: 1 (888) 4PTGLAB (1-888-478-4522) (toll free in USA), or 1(312) 455-8498 (outside USA)
E: proteintech@ptglab.com
W: ptglab.com

This product is exclusively available under Proteintech Group brand and is not available to purchase from any other manufacturer.

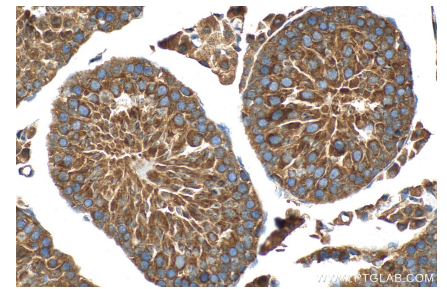
Selected Validation Data



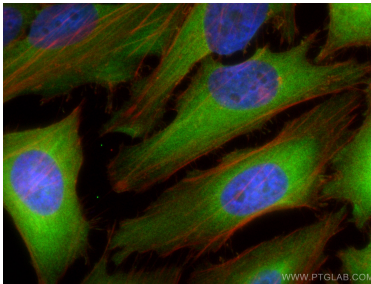
Various lysates were subjected to SDS PAGE followed by western blot with 27804-1-AP (RanBP1 antibody) at dilution of 1:3000 incubated at room temperature for 1.5 hours.



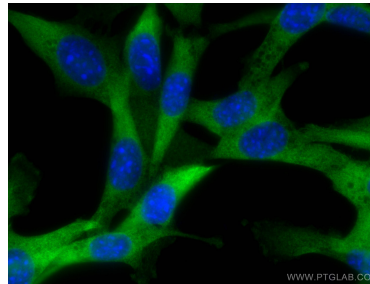
Various lysates were subjected to SDS PAGE followed by western blot with 27804-1-AP (RanBP1 antibody) at dilution of 1:4000 incubated at room temperature for 1.5 hours.



Immunohistochemical analysis of paraffin-embedded mouse testis tissue slide using 27804-1-AP (RanBP1 antibody) at dilution of 1:800 (under 40x lens). Heat mediated antigen retrieval with Tris-EDTA buffer (pH 9.0).



Immunofluorescent analysis of (4% PFA) fixed HeLa cells using RanBP1 antibody (27804-1-AP) at dilution of 1:200 and Coralite® 488-Conjugated AffiniPure Goat Anti-Rabbit IgG(H+L), CL594-Phalloidin (red).



Immunofluorescent analysis of (4% PFA) fixed NIH/3T3 cells using RanBP1 antibody (27804-1-AP) at dilution of 1:200 and Coralite® 488-Conjugated AffiniPure Goat Anti-Rabbit IgG(H+L).