

For Research Use Only

# RSL1D1 Polyclonal antibody

Catalog Number: 27667-1-AP



## Basic Information

<b>Catalog Number:</b> 27667-1-AP	<b>GenBank Accession Number:</b> BC112228	<b>Purification Method:</b> Antigen affinity purification
<b>Size:</b> 150ul , Concentration: 450 µg/ml by Nanodrop;	<b>GeneID (NCBI):</b> 26156	<b>Recommended Dilutions:</b> WB 1:500-1:3000 IHC 1:200-1:800
<b>Source:</b> Rabbit	<b>Full Name:</b> ribosomal L1 domain containing 1	
<b>Isotype:</b> IgG	<b>Calculated MW:</b> 490 aa, 55 kDa	
<b>Immunogen Catalog Number:</b> AG24923	<b>Observed MW:</b> 55-70 kDa	

## Applications

### Tested Applications:

IHC, WB, ELISA

### Species Specificity:

Human

**Note-IHC: suggested antigen retrieval with TE buffer pH 9.0; (\*) Alternatively, antigen retrieval may be performed with citrate buffer pH 6.0**

### Positive Controls:

WB : U-251 cells, HCT 116 cells, HEK-293 cells, SW480 cells, K-562 cells, HepG2 cells, PC-3 cells

IHC : mouse colon tissue,

## Background Information

RL1D1, Ribosomal L1 domain-containing protein 1, also named CSIG, a member of the universal ribosomal protein uL1 family. RL1D1 regulates cellular senescence through inhibition of PTEN translation. It acts as a pro-apoptotic regulator in response to DNA damage (PMID: 18678645, PMID: 22419112). RSL1D1 promoted the progression of colorectal cancer through RAN-mediated autophagy suppression. RSL1D1 can be detected 70 kDa (PMID:35013134).

## Storage

### Storage:

Store at -20°C. Stable for one year after shipment.

### Storage Buffer:

PBS with 0.02% sodium azide and 50% glycerol pH 7.3.

Aliquoting is unnecessary for -20°C storage

**\*\*\* 20ul sizes contain 0.1%BSA**

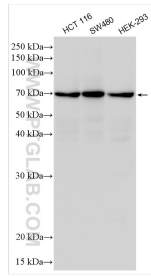
For technical support and original validation data for this product please contact:

T: 1 (888) 4PTGLAB (1-888-478-4522) (toll free in USA), or 1(312) 455-8498 (outside USA)

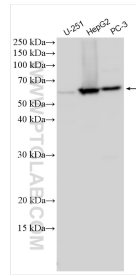
E: proteintech@ptglab.com  
W: ptglab.com

**This product is exclusively available under Proteintech Group brand and is not available to purchase from any other manufacturer.**

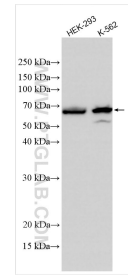
## Selected Validation Data



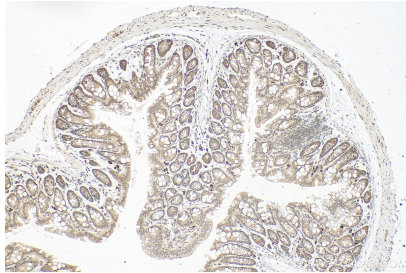
Various lysates were subjected to SDS PAGE followed by western blot with 27667-1-AP (RSL1D1 antibody) at dilution of 1:2000 incubated at room temperature for 1.5 hours.



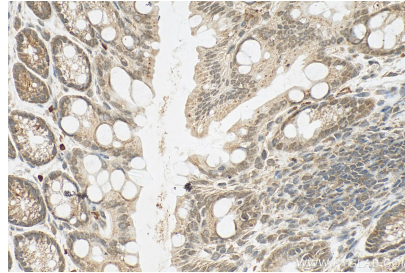
Various lysates were subjected to SDS PAGE followed by western blot with 27667-1-AP (RSL1D1 antibody) at dilution of 1:1500 incubated at room temperature for 1.5 hours.



Various lysates were subjected to SDS PAGE followed by western blot with 27667-1-AP (RSL1D1 antibody) at dilution of 1:1500 incubated at room temperature for 1.5 hours.



Immunohistochemical analysis of paraffin-embedded mouse colon tissue slide using 27667-1-AP (RSL1D1 antibody) at dilution of 1:400 (under 10x lens). Heat mediated antigen retrieval with Tris-EDTA buffer (pH 9.0).



Immunohistochemical analysis of paraffin-embedded mouse colon tissue slide using 27667-1-AP (RSL1D1 antibody) at dilution of 1:400 (under 40x lens). Heat mediated antigen retrieval with Tris-EDTA buffer (pH 9.0).