

For Research Use Only

# MT1A Polyclonal antibody

Catalog Number: 27115-1-AP



## Basic Information

<b>Catalog Number:</b> 27115-1-AP	<b>GenBank Accession Number:</b> BC029475	<b>Purification Method:</b> Antigen affinity purification
<b>Size:</b> 150ul , Concentration: 700 µg/ml by Nanodrop;	<b>GeneID (NCBI):</b> 4489	<b>Recommended Dilutions:</b> IHC 1:50-1:500 IF 1:200-1:800
<b>Source:</b> Rabbit	<b>Full Name:</b> metallothionein 1A	
<b>Isotype:</b> IgG	<b>Calculated MW:</b> 61 aa, 6 kDa	
<b>Immunogen Catalog Number:</b> AG25747	<b>Observed MW:</b> 6 kDa	

## Applications

<b>Tested Applications:</b> IF, IHC, ELISA	<b>Positive Controls:</b> IHC : human kidney tissue, human liver tissue IF : HeLa cells,
<b>Species Specificity:</b> human	
<b>Note-IHC: suggested antigen retrieval with TE buffer pH 9.0; (*) Alternatively, antigen retrieval may be performed with citrate buffer pH 6.0</b>	

## Background Information

### Storage

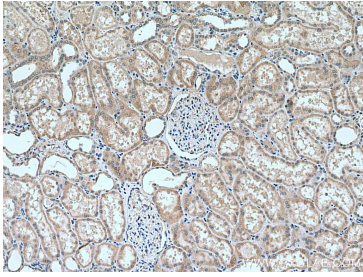
**Storage:**  
Store at -20°C. Stable for one year after shipment.  
**Storage Buffer:**  
PBS with 0.02% sodium azide and 50% glycerol pH 7.3.  
Aliquoting is unnecessary for -20°C storage

\*\*\* 20ul sizes contain 0.1% BSA

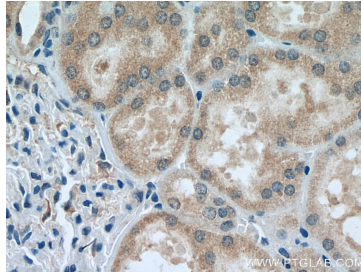
For technical support and original validation data for this product please contact:  
T: 1 (888) 4PTGLAB (1-888-478-4522) (toll free in USA), or 1(312) 455-8498 (outside USA)  
E: proteintech@ptglab.com  
W: ptglab.com

This product is exclusively available under Proteintech Group brand and is not available to purchase from any other manufacturer.

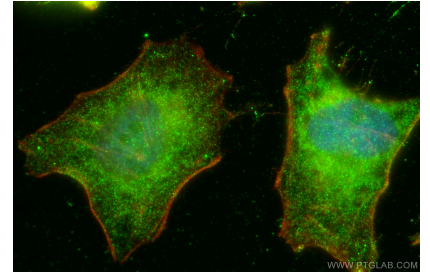
## Selected Validation Data



Immunohistochemical analysis of paraffin-embedded human kidney tissue slide using 27115-1-AP (MT1A antibody) at dilution of 1:200 (under 10x lens). Heat mediated antigen retrieval with Tris-EDTA buffer (pH 9.0).



Immunohistochemical analysis of paraffin-embedded human kidney tissue slide using 27115-1-AP (MT1A antibody) at dilution of 1:200 (under 40x lens). Heat mediated antigen retrieval with Tris-EDTA buffer (pH 9.0).



Immunofluorescent analysis of (4% PFA) fixed HeLa cells using MT1A antibody (27115-1-AP) at dilution of 1:400 and CoraLite@488-Conjugated AffiniPure Goat Anti-Rabbit IgG(H+L), CL594-phalloidin (red).