

For Research Use Only

RFX1 Polyclonal antibody

Catalog Number: 26859-1-AP

Featured Product

1 Publications



Basic Information

Catalog Number: 26859-1-AP	GenBank Accession Number: BC049826	Purification Method: Antigen affinity purification
Size: 150ul , Concentration: 500 µg/ml by Nanodrop and 400 µg/ml by Bradford method using BSA as the standard;	GeneID (NCBI): 5989	Recommended Dilutions: WB 1:500-1:2000
Source: Rabbit	Full Name: regulatory factor X, 1 (influences HLA class II expression)	
Isotype: IgG	Calculated MW: 105 kDa	
Immunogen Catalog Number: AG25442	Observed MW: 135 kDa	

Applications

Tested Applications: WB, ELISA	Positive Controls: WB : Jurkat cells, HL-60 cells
Cited Applications: IF, WB	
Species Specificity: human	
Cited Species: human, mouse	

Background Information

RFX1, also named as MHC class II regulatory factor RFX1, is a 979 amino acid protein which contains 1 RFX-type winged-helix DNA-binding domain and belongs to the RFX family. RFX1 can binds DNA as a homodimer and heterodimerizes with RFX2 and RFX3. RFX1 as a regulatory factor is essential for MHC class II genes expression. RFX1 protein is modified after translation and its molecular weight could be migrate to 130-140 kDa (PMID: 20189986).

Notable Publications

Author	Pubmed ID	Journal	Application
Wentao Jia	37781522	Int J Biol Sci	IF, WB

Storage

Storage:
Store at -20°C. Stable for one year after shipment.
Storage Buffer:
PBS with 0.02% sodium azide and 50% glycerol pH 7.3.
Aliquoting is unnecessary for -20°C storage

*** 20ul sizes contain 0.1% BSA

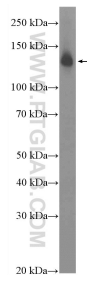
For technical support and original validation data for this product please contact:

T: 1 (888) 4PTGLAB (1-888-478-4522) (toll free in USA), or 1(312) 455-8498 (outside USA)

E: proteintech@ptglab.com
W: ptglab.com

This product is exclusively available under Proteintech Group brand and is not available to purchase from any other manufacturer.

Selected Validation Data



Jurkat cells were subjected to SDS PAGE followed by western blot with 26859-1-AP (RF χ 1 Antibody) at dilution of 1:1000 incubated at room temperature for 1.5 hours.