

For Research Use Only

TREK1/KCNK2 Polyclonal antibody

Catalog Number: 26807-1-AP



Basic Information

Catalog Number: 26807-1-AP	GenBank Accession Number: BC101693	Purification Method: Antigen affinity purification
Size: 150ul , Concentration: 450 µg/ml by Nanodrop;	GeneID (NCBI): 3776	Recommended Dilutions: WB 1:500-1:2000
Source: Rabbit	Full Name: potassium channel, subfamily K, member 2	
Isotype: IgG	Calculated MW: 411 aa, 46 kDa	
Immunogen Catalog Number: AG25209	Observed MW: 40-50 kDa	

Applications

Tested Applications: WB, ELISA	Positive Controls: WB : LNCaP cells, SH-SY5Y cells
Species Specificity: human	

Background Information

The tandem of pore domains in a weak inward rectifying K⁺ channel (TWIK1, K2P1.1, or KCNK1) and TWIK-related K⁺ channel 1 (TREK1, K2P 2.1, or KCNK2) are members of the two pore domain potassium (K2P) channel family, consisting of 15 channels that regulate the stabilization of resting membrane potential and cellular excitability by wielding background K⁺ leakage currents (PMID:12580339). TREK1/KCNK2 is sensitive to a wide range of physical and chemical cues. Its main role is to maintain the resting potential of the cell and whilst highly expressed in the nervous system, TREK1/KCNK2 is also expressed in the kidney, heart, lung and smooth muscle cells (PMID:31031627).

Storage

Storage:
Store at -20°C. Stable for one year after shipment.
Storage Buffer:
PBS with 0.02% sodium azide and 50% glycerol pH 7.3.
Aliquoting is unnecessary for -20°C storage

*** 20ul sizes contain 0.1% BSA

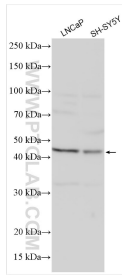
For technical support and original validation data for this product please contact:

T: 1 (888) 4PTGLAB (1-888-478-4522) (toll free in USA), or 1(312) 455-8498 (outside USA)

E: proteintech@ptglab.com
W: ptglab.com

This product is exclusively available under Proteintech Group brand and is not available to purchase from any other manufacturer.

Selected Validation Data



Various lysates were subjected to SDS PAGE followed by western blot with 26807-1-AP (TREK1 antibody) at dilution of 1:1000 incubated at room temperature for 1.5 hours.