

For Research Use Only

GPSM2 Polyclonal antibody

Catalog Number: 26798-1-AP



Basic Information

Catalog Number: 26798-1-AP	GenBank Accession Number: BC027732	Purification Method: Antigen affinity purification
Size: 150ul, Concentration: 260 µg/ml by Nanodrop and 200 µg/ml by Bradford method using BSA as the standard;	GeneID (NCBI): 29899	Recommended Dilutions: WB 1:1000-1:4000 IHC 1:50-1:500 IF 1:50-1:500
Source: Rabbit	Full Name: G-protein signaling modulator 2 (AGS3-like, C. elegans)	
Isotype: IgG	Calculated MW: 75 kDa	
Immunogen Catalog Number: AG25195	Observed MW: 70-77 kDa	

Applications

Tested Applications:

IF, IHC, WB, ELISA

Species Specificity:

human, mouse, rat

Note-IHC: suggested antigen retrieval with TE buffer pH 9.0; (*) Alternatively, antigen retrieval may be performed with citrate buffer pH 6.0

Positive Controls:

WB: HeLa cells, HEK-293 cells, mouse heart tissue, HEK-293T cells, mouse liver tissue

IHC: human placenta tissue, human liver tissue

IF: MCF-7 cells,

Background Information

GPSM2 belongs to a family of proteins that modulate activation of G proteins. GPSM2 assists in the exchange of guanine nucleotides, and allows extracellular signals to be transmitted to cells via cell surface, and ultimately plays a key role in the activation of G-proteins. Therefore, GPSM2 is a critical factor for the stability of cell division. Some recent studies have shown that GPSM2 messenger RNA (mRNA) is overexpressed and plays a positive role in the development of certain tumors, such as liver cancer, pancreatic cancer, breast cancer. It also plays a role in neuroblast division and in the development of normal hearing. Mutations in GPSM2 are associated with autosomal recessive nonsyndromic deafness (DFNB82), which is a form of non-syndromic deafness characterized by prelingual, bilateral, severe, sensorineural hearing loss.

Storage

Storage:

Store at -20°C. Stable for one year after shipment.

Storage Buffer:

PBS with 0.02% sodium azide and 50% glycerol pH 7.3.

Aliquoting is unnecessary for -20°C storage

*** 20ul sizes contain 0.1% BSA

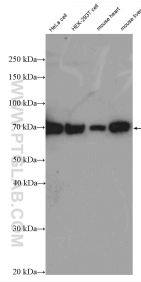
For technical support and original validation data for this product please contact:

T: 1 (888) 4PTGLAB (1-888-478-4522) (toll free in USA), or 1(312) 455-8498 (outside USA)

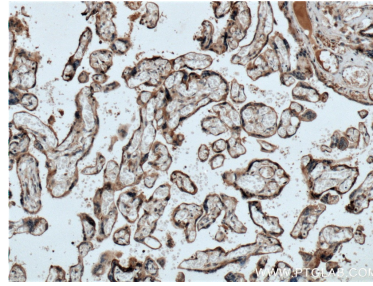
E: proteintech@ptglab.com
W: ptglab.com

This product is exclusively available under Proteintech Group brand and is not available to purchase from any other manufacturer.

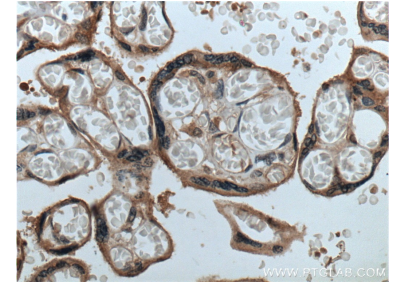
Selected Validation Data



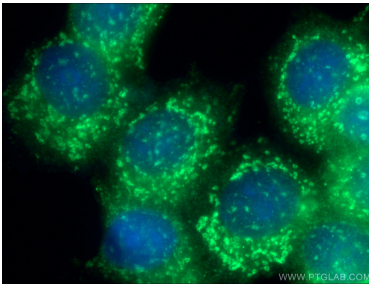
Various lysates were subjected to SDS PAGE followed by western blot with 26798-1-AP (GPSM2 antibody) at dilution of 1:2000 incubated at room temperature for 1.5 hours.



Immunohistochemical analysis of paraffin-embedded human placenta tissue slide using 26798-1-AP (GPSM2 antibody) at dilution of 1:200 (under 10x lens. Heat mediated antigen retrieval with Tris-EDTA buffer (pH 9.0).



Immunohistochemical analysis of paraffin-embedded human placenta tissue slide using 26798-1-AP (GPSM2 antibody) at dilution of 1:200 (under 40x lens. Heat mediated antigen retrieval with Tris-EDTA buffer (pH 9.0).



Immunofluorescent analysis of (-20°C Ethanol) fixed MCF-7 cells using 26798-1-AP (GPSM2 antibody) at dilution of 1:50 and Alexa Fluor 488-conjugated AffiniPure Goat Anti-Rabbit IgG(H+L).