

For Research Use Only

# INPPL1 Polyclonal antibody

Catalog Number: 26678-1-AP



## Basic Information

<b>Catalog Number:</b> 26678-1-AP	<b>GenBank Accession Number:</b> BC140853	<b>Purification Method:</b> Antigen affinity purification
<b>Size:</b> 150ul , Concentration: 700 µg/ml by Nanodrop;	<b>GeneID (NCBI):</b> 3636	<b>Recommended Dilutions:</b> WB 1:500-1:3000 IP 0.5-4.0 ug for IP and 1:500-1:1000
<b>Source:</b> Rabbit	<b>Full Name:</b> inositol polyphosphate phosphatase-like 1	<b>for WB</b> IHC 1:250-1:1000
<b>Isotype:</b> IgG	<b>Calculated MW:</b> 1258 aa, 139 kDa	
<b>Immunogen Catalog Number:</b> AG24790	<b>Observed MW:</b> 150 kDa	

## Applications

### Tested Applications:

IHC, IP, WB, ELISA

### Species Specificity:

human, mouse

**Note-IHC: suggested antigen retrieval with TE buffer pH 9.0; (\*) Alternatively, antigen retrieval may be performed with citrate buffer pH 6.0**

### Positive Controls:

WB : HeLa cells, NIH/3T3 cells

IP : HeLa cells,

IHC : mouse stomach tissue,

## Background Information

### Storage

#### Storage:

Store at -20°C. Stable for one year after shipment.

#### Storage Buffer:

PBS with 0.02% sodium azide and 50% glycerol pH 7.3.

Aliquoting is unnecessary for -20°C storage

\*\*\* 20ul sizes contain 0.1% BSA

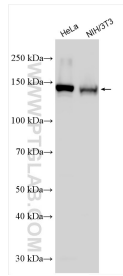
For technical support and original validation data for this product please contact:

T: 1 (888) 4PTGLAB (1-888-478-4522) (toll free in USA), or 1(312) 455-8498 (outside USA)

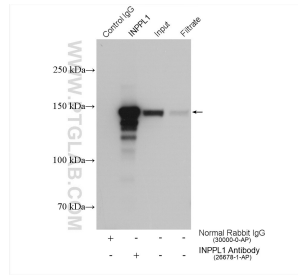
E: [proteintech@ptglab.com](mailto:proteintech@ptglab.com)  
W: [ptglab.com](http://ptglab.com)

This product is exclusively available under Proteintech Group brand and is not available to purchase from any other manufacturer.

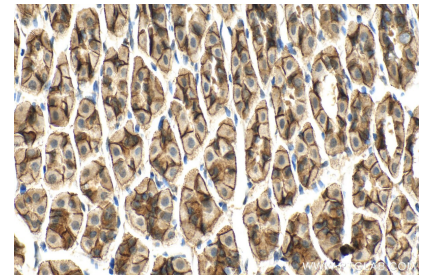
## Selected Validation Data



Various lysates were subjected to SDS PAGE followed by western blot with 26678-1-AP (INPPL1 antibody) at dilution of 1:1500 incubated at room temperature for 1.5 hours.



IP result of anti-INPPL1(IP:26678-1-AP, 4ug; Detection:26678-1-AP 1:800) with HeLa cells lysate 2520 ug.



Immunohistochemical analysis of paraffin-embedded mouse stomach tissue slide using 26678-1-AP (INPPL1 antibody) at dilution of 1:500 (under 40x lens). Heat mediated antigen retrieval with Tris-EDTA buffer (pH 9.0).