

For Research Use Only

# LIN37 Polyclonal antibody

Catalog Number: 26651-1-AP



## Basic Information

<b>Catalog Number:</b> 26651-1-AP	<b>GenBank Accession Number:</b> BC009071	<b>Purification Method:</b> Antigen affinity purification
<b>Size:</b> 150ul , Concentration: 500 µg/ml by Nanodrop and 333 µg/ml by Bradford method using BSA as the standard;	<b>GeneID (NCBI):</b> 55957	<b>Recommended Dilutions:</b> WB 1:1000-1:6000 IF 1:50-1:500
<b>Source:</b> Rabbit	<b>Full Name:</b> lin-37 homolog (C. elegans)	
<b>Isotype:</b> IgG	<b>Observed MW:</b> 36 kDa	
<b>Immunogen Catalog Number:</b> AG24565		

## Applications

<b>Tested Applications:</b> IF, WB, ELISA	<b>Positive Controls:</b> WB : A549 cells, Jurkat cells
<b>Species Specificity:</b> human	IF : A549 cells,

## Background Information

LIN37, also named as Antolefinin and MSTP064, is a component of the DREAM complex (also named LINC complex). LIN37 migrates to 37 kDa for modification.

## Storage

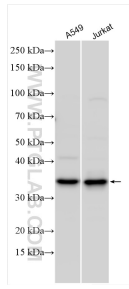
**Storage:**  
Store at -20°C. Stable for one year after shipment.  
**Storage Buffer:**  
PBS with 0.02% sodium azide and 50% glycerol pH 7.3.  
Aliquoting is unnecessary for -20°C storage

\*\*\* 20ul sizes contain 0.1% BSA

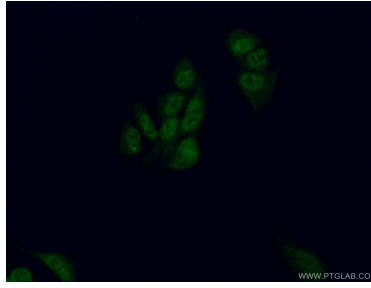
For technical support and original validation data for this product please contact:  
T: 1 (888) 4PTGLAB (1-888-478-4522) (toll free in USA), or 1(312) 455-8498 (outside USA)  
E: proteintech@ptglab.com  
W: ptglab.com

This product is exclusively available under Proteintech Group brand and is not available to purchase from any other manufacturer.

## Selected Validation Data



Various lysates were subjected to SDS PAGE followed by western blot with 26651-1-AP (LIN37 antibody) at dilution of 1:3000 incubated at room temperature for 1.5 hours.



Immunofluorescent analysis of (4% PFA) fixed A549 cells using 26651-1-AP (LIN37 antibody) at dilution of 1:50 and Alexa Fluor 488-conjugated AffiniPure Goat Anti-Rabbit IgG(H+L).