

For Research Use Only

C13orf1 Polyclonal antibody

Catalog Number: 26510-1-AP



Basic Information

Catalog Number: 26510-1-AP	GenBank Accession Number: BC022519	Purification Method: Antigen affinity purification
Size: 150ul , Concentration: 1000 µg/ml by Nanodrop and 333 µg/ml by Bradford method using BSA as the standard;	GeneID (NCBI): 57213	Recommended Dilutions: WB 1:500-1:1000 IHC 1:50-1:500 IF 1:50-1:500
Source: Rabbit	Full Name: chromosome 13 open reading frame 1	
Isotype: IgG	Observed MW: 17 kDa, 20 kDa	
Immunogen Catalog Number: AG23487		

Applications

Tested Applications: IF, IHC, WB, ELISA	Positive Controls:
Species Specificity: human, mouse	WB: mouse brain tissue, IHC: human lymphoma tissue, IF: PC-12 cells,
Note-IHC: suggested antigen retrieval with TE buffer pH 9.0; (*) Alternatively, antigen retrieval may be performed with citrate buffer pH 6.0	

Background Information

C13orf1, also named as SPRYD7 and CLLD6, is involved in hematopoiesis via NOTCH signaling. C13orf1 plays an important role in the pathogenesis of B-CLL. There're some isoforms of C13orf1 with MW 15-17 kDa and 19-22 kDa.

Storage

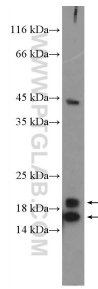
Storage:
Store at -20°C. Stable for one year after shipment.
Storage Buffer:
PBS with 0.02% sodium azide and 50% glycerol pH 7.3.
Aliquoting is unnecessary for -20°C storage

*** 20ul sizes contain 0.1% BSA

For technical support and original validation data for this product please contact:
T: 1 (888) 4PTGLAB (1-888-478-4522) (toll free in USA), or 1(312) 455-8498 (outside USA)
E: proteintech@ptglab.com
W: ptglab.com

This product is exclusively available under Proteintech Group brand and is not available to purchase from any other manufacturer.

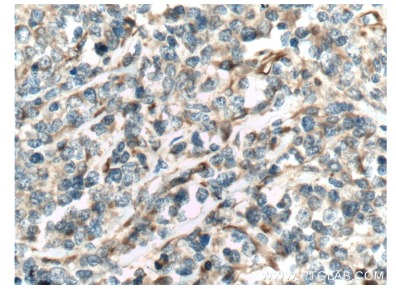
Selected Validation Data



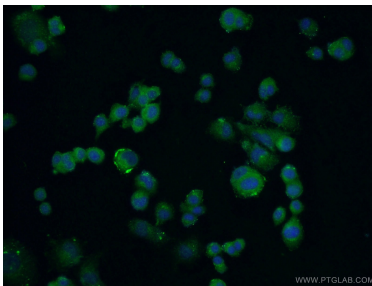
mouse brain tissue were subjected to SDS PAGE followed by western blot with 26510-1-AP (C13orf1 Antibody) at dilution of 1:600 incubated at room temperature for 1.5 hours.



Immunohistochemical analysis of paraffin-embedded human lymphoma tissue slide using 26510-1-AP (C13orf1 Antibody) at dilution of 1:200 (under 10x lens). Heat mediated antigen retrieval with Tris-EDTA buffer (pH 9.0).



Immunohistochemical analysis of paraffin-embedded human lymphoma tissue slide using 26510-1-AP (C13orf1 Antibody) at dilution of 1:200 (under 40x lens). Heat mediated antigen retrieval with Tris-EDTA buffer (pH 9.0).



Immunofluorescent analysis of (-20°C Ethanol) fixed PC-12 cells using 26510-1-AP (C13orf1 antibody) at dilution of 1:50 and Alexa Fluor 488-conjugated AffiniPure Goat Anti-Rabbit IgG(H+L).