

For Research Use Only

# GNB1L Polyclonal antibody

Catalog Number: 26484-1-AP



## Basic Information

<b>Catalog Number:</b> 26484-1-AP	<b>GenBank Accession Number:</b> BC012060	<b>Purification Method:</b> Antigen affinity purification
<b>Size:</b> 150ul , Concentration: 450 µg/ml by Nanodrop;	<b>GeneID (NCBI):</b> 54584	<b>Recommended Dilutions:</b> WB 1:500-1:2000
<b>Source:</b> Rabbit	<b>Full Name:</b> guanine nucleotide binding protein (G protein), beta polypeptide 1-like	
<b>Isotype:</b> IgG	<b>Calculated MW:</b> 327 aa, 36 kDa	
<b>Immunogen Catalog Number:</b> AG24391	<b>Observed MW:</b> 36 kDa, 18 kDa	

## Applications

<b>Tested Applications:</b> WB, ELISA	<b>Positive Controls:</b> WB : A549 cells, Jurkat cells, MCF-7 cells
<b>Species Specificity:</b> human	

## Background Information

GNB1L (G-protein subunit beta 1 like), located at 22q11.2, encodes a G-protein L-subunit-like polypeptide which is a member of the WD repeat protein family (PMID: 20538345). In humans, the hemizygous deletion of GNB1L can cause sensorimotor gating defects, which are related to schizophrenia and other serious mental diseases (PMID: 32847500). Moreover, GNB1L is a key regulator of DDR signaling via its role as a co-chaperone specifically regulating PIKK proteins (PMID: 37541219). GNB1L has 2 isoforms 36 kDa and 22 kDa, about 22 kDa which may be produced by Alternative splicing.

## Storage

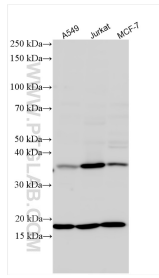
**Storage:**  
Store at -20°C. Stable for one year after shipment.  
**Storage Buffer:**  
PBS with 0.02% sodium azide and 50% glycerol pH 7.3.  
Aliquoting is unnecessary for -20°C storage

\*\*\* 20ul sizes contain 0.1% BSA

For technical support and original validation data for this product please contact:  
T: 1 (888) 4PTGLAB (1-888-478-4522) (toll free in USA), or 1(312) 455-8498 (outside USA) E: proteintech@ptglab.com W: ptglab.com

This product is exclusively available under Proteintech Group brand and is not available to purchase from any other manufacturer.

## Selected Validation Data



Various lysates were subjected to SDS PAGE followed by western blot with 26484-1-AP (GNB1L antibody) at dilution of 1:1000 incubated at room temperature for 1.5 hours.