

For Research Use Only

# MOS Polyclonal antibody

Catalog Number: 26454-1-AP



## Basic Information

<b>Catalog Number:</b> 26454-1-AP	<b>GenBank Accession Number:</b> BC069569	<b>Purification Method:</b> Antigen affinity purification
<b>Size:</b> 150ul , Concentration: 100 µg/ml by Nanodrop;	<b>GeneID (NCBI):</b> 4342	<b>Recommended Dilutions:</b> WB 1:500-1:1000 IHC 1:50-1:500 IF 1:200-1:800
<b>Source:</b> Rabbit	<b>Full Name:</b> v-mos Moloney murine sarcoma viral oncogene homolog	
<b>Isotype:</b> IgG	<b>Calculated MW:</b> 346 aa, 38 kDa	
<b>Immunogen Catalog Number:</b> AG24585	<b>Observed MW:</b> 34-38 kDa	

## Applications

### Tested Applications:

IF, IHC, WB, ELISA

### Species Specificity:

human

**Note-IHC: suggested antigen retrieval with TE buffer pH 9.0; (\*) Alternatively, antigen retrieval may be performed with citrate buffer pH 6.0**

### Positive Controls:

WB : A549 cells, HeLa cells, HEK-293 cells, Jurkat cells

IHC : human liver tissue,

IF : HeLa cells,

## Background Information

Mos is a germ cell-specific serine/threonine protein kinase, can induce oncogenic transformation of somatic cells by direct phosphorylation of MAP kinase/ERK kinase (MEK1), activating the mitogen-activated protein kinases ERK1 and ERK2.

## Storage

### Storage:

Store at -20°C. Stable for one year after shipment.

### Storage Buffer:

PBS with 0.02% sodium azide and 50% glycerol pH 7.3.

Aliquoting is unnecessary for -20°C storage

\*\*\* 20ul sizes contain 0.1% BSA

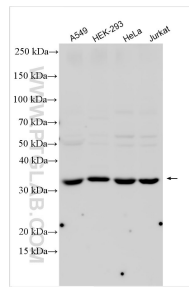
For technical support and original validation data for this product please contact:

T: 1 (888) 4PTGLAB (1-888-478-4522) (toll free in USA), or 1(312) 455-8498 (outside USA)

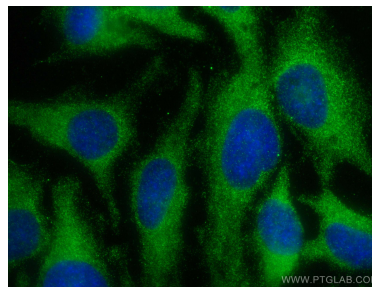
E: proteintech@ptglab.com  
W: ptglab.com

This product is exclusively available under Proteintech Group brand and is not available to purchase from any other manufacturer.

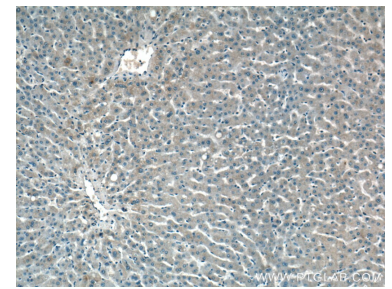
## Selected Validation Data



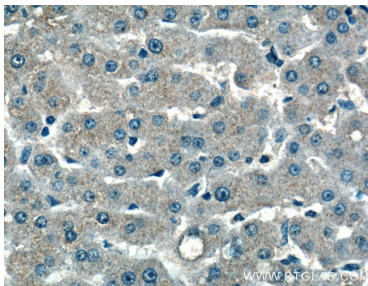
Various lysates were subjected to SDS PAGE followed by western blot with 26454-1-AP (MOS antibody) at dilution of 1:500 incubated at room temperature for 1.5 hours.



Immunofluorescent analysis of (-20°C Methanol) fixed HeLa cells using MOS antibody (26454-1-AP) at dilution of 1:400 and CoraLite® 488-Conjugated AffiniPure Goat Anti-Rabbit IgG(H+L).



Immunohistochemical analysis of paraffin-embedded human liver tissue slide using 26454-1-AP (MOS Antibody) at dilution of 1:200 (under 10x lens).



Immunohistochemical analysis of paraffin-embedded human liver tissue slide using 26454-1-AP (MOS Antibody) at dilution of 1:200 (under 40x lens).