

For Research Use Only

CCDC59 Polyclonal antibody

Catalog Number: 26387-1-AP



Basic Information

Catalog Number: 26387-1-AP	GenBank Accession Number: BC020647	Purification Method: Antigen affinity purification
Size: 150ul, Concentration: 750 µg/ml by Nanodrop and 400 µg/ml by Bradford method using BSA as the standard;	GeneID (NCBI): 29080	Recommended Dilutions: WB 1:1000-1:4000 IP 0.5-4.0 ug for IP and 1:500-1:2000 for WB
Source: Rabbit	Full Name: coiled-coil domain containing 59	Observed MW: 34-38 kDa
Isotype: IgG		
Immunogen Catalog Number: AG23852		

Applications

Tested Applications: IHC, IP, WB, ELISA	Positive Controls: WB: MCF-7 cells, IP: HepG2 cells, IHC: human lung cancer tissue,
Species Specificity: human	
Note-IHC: suggested antigen retrieval with TE buffer pH 9.0; (*) Alternatively, antigen retrieval may be performed with citrate buffer pH 6.0	

Background Information

Storage

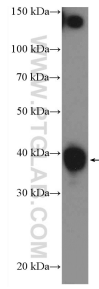
Storage:
Store at -20°C. Stable for one year after shipment.
Storage Buffer:
PBS with 0.02% sodium azide and 50% glycerol pH 7.3.
Aliquoting is unnecessary for -20°C storage

*** 20ul sizes contain 0.1% BSA

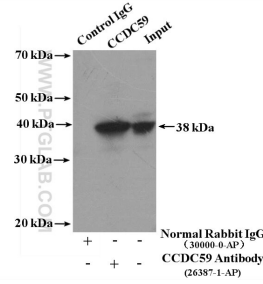
For technical support and original validation data for this product please contact:
T: 1 (888) 4PTGLAB (1-888-478-4522) (toll free in USA), or 1(312) 455-8498 (outside USA)
E: proteintech@ptglab.com
W: ptglab.com

This product is exclusively available under Proteintech Group brand and is not available to purchase from any other manufacturer.

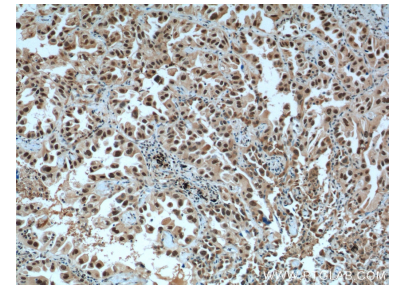
Selected Validation Data



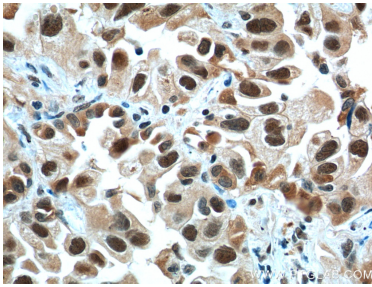
MCF-7 cells were subjected to SDS PAGE followed by western blot with 26387-1-AP (CCDC59 Antibody) at dilution of 1:2000 incubated at room temperature for 1.5 hours.



IP Result of anti-CCDC59 (IP:26387-1-AP, 4ug; Detection:26387-1-AP 1:1000) with HepG2 cells lysate 4000ug.



Immunohistochemical analysis of paraffin-embedded human lung cancer tissue slide using 26387-1-AP (CCDC59 Antibody) at dilution of 1:200 (under 10x lens). Heat mediated antigen retrieval with Tris-EDTA buffer (pH 9.0).



Immunohistochemical analysis of paraffin-embedded human lung cancer tissue slide using 26387-1-AP (CCDC59 Antibody) at dilution of 1:200 (under 40x lens). Heat mediated antigen retrieval with Tris-EDTA buffer (pH 9.0).