

For Research Use Only

DDX5 Polyclonal antibody

Catalog Number: 26385-1-AP **1 Publications**



Basic Information

Catalog Number: 26385-1-AP	GenBank Accession Number: NM_004396	Purification Method: Antigen affinity purification
Size: 150ul, Concentration: 650 µg/ml by Nanodrop and 347 µg/ml by Bradford method using BSA as the standard;	GeneID (NCBI): 1655	Recommended Dilutions: WB 1:500-1:2000 IP 0.5-4.0 ug for 1.0-3.0 mg of total protein lysate IF 1:50-1:500
Source: Rabbit	UNIPROT ID: P17844	
Isotype: IgG	Full Name: DEAD (Asp-Glu-Ala-Asp) box polypeptide 5	
Immunogen Catalog Number: AG24821	Observed MW: 69 kDa	

Applications

Tested Applications: WB, IP, IF, ELISA	Positive Controls: WB : HepG2 cells, HeLa cells IP : HeLa cells, IF : HepG2 cells,
Cited Applications: WB	
Species Specificity: human	
Cited Species: human	

Notable Publications

Author	Pubmed ID	Journal	Application
Xuwen Chen	38232462	Eur J Med Chem	WB

Storage

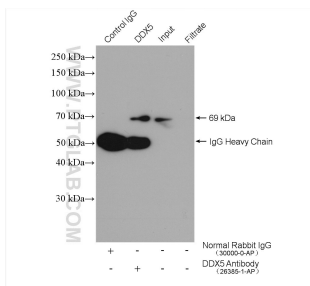
Storage:
Store at -20°C. Stable for one year after shipment.
Storage Buffer:
PBS with 0.02% sodium azide and 50% glycerol pH 7.3.
Aliquoting is unnecessary for -20°C storage

*** 20ul sizes contain 0.1% BSA

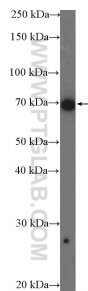
For technical support and original validation data for this product please contact:
T: 1 (888) 4PTGLAB (1-888-478-4522) (toll free in USA), or 1(312) 455-8498 (outside USA)
E: proteintech@ptglab.com
W: ptglab.com

This product is exclusively available under Proteintech Group brand and is not available to purchase from any other manufacturer.

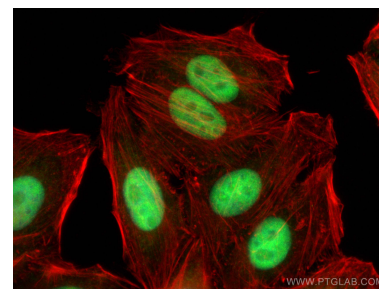
Selected Validation Data



IP result of anti-DDX5 (IP:26385-1-AP, 4ug;
Detection:26385-1-AP 1:500) with HeLa cells lysate
1600 ug.



HepG2 cells were subjected to SDS PAGE followed
by western blot with 26385-1-AP (DDX5 Antibody)
at dilution of 1:1000 incubated at room
temperature for 1.5 hours.



Immunofluorescent analysis of (4% PFA) fixed
HepG2 cells using DDX5 antibody (26385-1-AP) at
dilution of 1:200 and CoraLite@488-Conjugated
AffiniPure Goat Anti-Rabbit IgG(H+L), CL594-
phalloidin (red).