

For Research Use Only

GTF3C6 Polyclonal antibody

Catalog Number: 26382-1-AP



Basic Information

Catalog Number: 26382-1-AP	GenBank Accession Number: BC011593	Purification Method: Antigen affinity purification
Size: 150ul , Concentration: 500 µg/ml by Nanodrop and 267 µg/ml by Bradford method using BSA as the standard;	GeneID (NCBI): 112495	Recommended Dilutions: WB 1:1000-1:6000 IP 0.5-4.0 ug for IP and 1:1000-1:4000 for WB
Source: Rabbit	Full Name: general transcription factor III C, polypeptide 6, alpha 35kDa	
Isotype: IgG	Observed MW: 35-38 kDa	
Immunogen Catalog Number: AG23895		

Applications

Tested Applications: IP, WB, ELISA	Positive Controls:
Species Specificity: human	WB : HeLa cells, HepG2 cells, K-562 cells IP : HepG2 cells,

Background Information

Storage

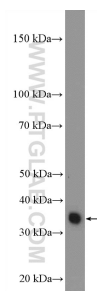
Storage:
Store at -20°C. Stable for one year after shipment.
Storage Buffer:
PBS with 0.02% sodium azide and 50% glycerol pH 7.3.
Aliquoting is unnecessary for -20°C storage

*** 20ul sizes contain 0.1% BSA

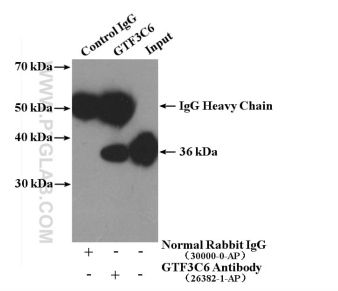
For technical support and original validation data for this product please contact:
T: 1 (888) 4PTGLAB (1-888-478-4522) (toll free in USA), or 1(312) 455-8498 (outside USA) E: proteintech@ptglab.com
W: ptglab.com

This product is exclusively available under Proteintech Group brand and is not available to purchase from any other manufacturer.

Selected Validation Data



HeLa cells were subjected to SDS PAGE followed by western blot with 26382-1-AP (GTF3C6 Antibody) at dilution of 1:3000 incubated at room temperature for 1.5 hours.



IP Result of anti-GTF3C6 (IP:26382-1-AP, 4ug; Detection:26382-1-AP 1:2000) with HepG2 cells lysate 3600ug.