

For Research Use Only

# CCDC21 Polyclonal antibody

Catalog Number: 26314-1-AP **2 Publications**



## Basic Information

<b>Catalog Number:</b> 26314-1-AP	<b>GenBank Accession Number:</b> BC064528	<b>Purification Method:</b> Antigen affinity purification
<b>Size:</b> 150ul , Concentration: 900 µg/ml by Nanodrop and 333 µg/ml by Bradford method using BSA as the standard;	<b>GeneID (NCBI):</b> 64793	<b>Recommended Dilutions:</b> WB 1:1000-1:4000
<b>Source:</b> Rabbit	<b>Full Name:</b> coiled-coil domain containing 21	
<b>Isotype:</b> IgG	<b>Observed MW:</b> 85-90 kDa	
<b>Immunogen Catalog Number:</b> AG23636		

## Applications

<b>Tested Applications:</b> WB,ELISA	<b>Positive Controls:</b> WB : HeLa cells, Jurkat cells
<b>Cited Applications:</b> IF, IP, WB	
<b>Species Specificity:</b> human	
<b>Cited Species:</b> human	

## Background Information

CCDC21, also named as CEP85, is a Centrosomal protein with MW 85 kDa. All the isoforms of CCDC21 can be detected by this antibody.

## Notable Publications

Author	Pubmed ID	Journal	Application
Canhe Chen	30611117	iScience	WB,IF,IP
Biröl Cabukusta	33296653	Cell Rep	WB

## Storage

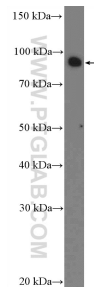
**Storage:**  
Store at -20°C. Stable for one year after shipment.  
**Storage Buffer:**  
PBS with 0.02% sodium azide and 50% glycerol pH 7.3.  
Aliquoting is unnecessary for -20°C storage

**\*\*\* 20ul sizes contain 0.1% BSA**

For technical support and original validation data for this product please contact:  
T: 1 (888) 4PTGLAB (1-888-478-4522) (toll free in USA), or 1(312) 455-8498 (outside USA)  
E: proteintech@ptglab.com  
W: ptglab.com

**This product is exclusively available under Proteintech Group brand and is not available to purchase from any other manufacturer.**

## Selected Validation Data



HeLa cells were subjected to SDS PAGE followed by western blot with 26314-1-AP (CCDC21 Antibody) at dilution of 1:2000 incubated at room temperature for 1.5 hours.