

For Research Use Only

# DLX2 Polyclonal antibody

Catalog Number: 26244-1-AP **4 Publications**



## Basic Information

<b>Catalog Number:</b> 26244-1-AP	<b>GenBank Accession Number:</b> BC032558	<b>Purification Method:</b> Antigen affinity purification
<b>Size:</b> 150ul, Concentration: 600 µg/ml by Nanodrop and 347 µg/ml by Bradford method using BSA as the standard;	<b>GeneID (NCBI):</b> 1746	<b>Recommended Dilutions:</b> WB 1:200-1:1000 IHC 1:50-1:500 IF 1:50-1:500
<b>Source:</b> Rabbit	<b>Full Name:</b> distal-less homeobox 2	
<b>Isotype:</b> IgG	<b>Calculated MW:</b> 34 kDa	
<b>Immunogen Catalog Number:</b> AG24663	<b>Observed MW:</b> 45-50 kDa	

## Applications

<b>Tested Applications:</b> IF, IHC, WB, ELISA	<b>Positive Controls:</b> WB: NIH/3T3 cells, IHC: mouse brain tissue, IF: SH-SY5Y cells,
<b>Cited Applications:</b> CoIP, IF, IHC, WB	
<b>Species Specificity:</b> human, mouse	
<b>Cited Species:</b> human, mouse	
<b>Note-IHC: suggested antigen retrieval with TE buffer pH 9.0; (*) Alternatively, antigen retrieval may be performed with citrate buffer pH 6.0</b>	

## Background Information

DLX2, also named as Homeobox protein DLX-2, is a 328 amino acid protein, which contains 1 homeobox DNA-binding domain and belongs to the distal-less homeobox family. DLX2 localizes in the nucleus and is a Phosphoprotein. DLX2 likely to play a regulatory role in the development of the ventral forebrain and may play a role in craniofacial patterning and morphogenesis. The calculated molecular weight of DLX2 is 34 kDa, but modified DLX2 is about 45-50 kDa. (PMID: 14769946)

## Notable Publications

Author	Pubmed ID	Journal	Application
Xukun Li	35917972	Cancer Lett	IHC
Christopher Y Chen	30408033	PLoS One	IF
Qi Cui	30787286	Cell Death Dis	WB

## Storage

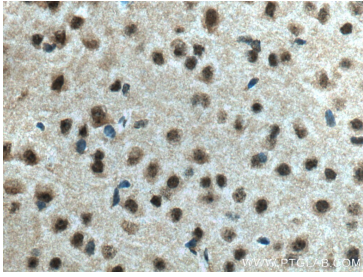
**Storage:**  
Store at -20°C. Stable for one year after shipment.  
**Storage Buffer:**  
PBS with 0.02% sodium azide and 50% glycerol pH 7.3.  
Aliquoting is unnecessary for -20°C storage

\*\*\* 20ul sizes contain 0.1% BSA

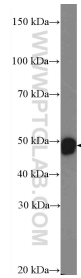
For technical support and original validation data for this product please contact:  
T: 1 (888) 4PTGLAB (1-888-478-4522) (toll free in USA), or 1(312) 455-8498 (outside USA)  
E: proteintech@ptglab.com  
W: ptglab.com

This product is exclusively available under Proteintech Group brand and is not available to purchase from any other manufacturer.

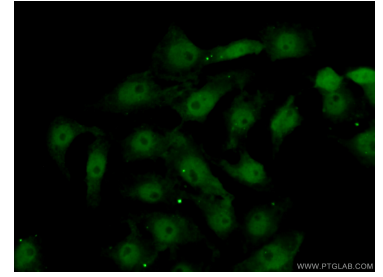
## Selected Validation Data



Immunohistochemical analysis of paraffin-embedded mouse brain tissue slide using 26244-1-AP (DLX2 antibody) at dilution of 1:200 (under 40x lens). Heat mediated antigen retrieval with Tris-EDTA buffer (pH 9.0).



NIH/3T3 cells were subjected to SDS PAGE followed by western blot with 26244-1-AP (DLX2 Antibody) at dilution of 1:300 incubated at room temperature for 1.5 hours.



Immunofluorescent analysis of (10% Formaldehyde) fixed SH-SY5Y cells using 26244-1-AP (DLX2 antibody) at dilution of 1:50 and Alexa Fluor 488-conjugated AffiniPure Goat Anti-Rabbit IgG(H+L).