

For Research Use Only

PPAPDC2 Polyclonal antibody

Catalog Number: 26234-1-AP



Basic Information

Catalog Number:

26234-1-AP

GenBank Accession Number:

BC038108

Purification Method:

Antigen affinity purification

Size:

150ul, Concentration: 1100 µg/ml by Nanodrop and 400 µg/ml by Bradford method using BSA as the standard;

GeneID (NCBI):

403313

Recommended Dilutions:

IP 0.5-4.0 µg for IP and 1:200-1:1000 for WB

Full Name:

phosphatidic acid phosphatase type 2 domain containing 2

Source:

Rabbit

Observed MW:

32 kDa

Isotype:

IgG

Immunogen Catalog Number:

AG23856

Applications

Tested Applications:

IF, IP, ELISA

Positive Controls:

IP: HepG2 cells,

Species Specificity:

human

IF: L02 cells,

Background Information

Storage

Storage:

Store at -20°C. Stable for one year after shipment.

Storage Buffer:

PBS with 0.02% sodium azide and 50% glycerol pH 7.3.

Aliquoting is unnecessary for -20°C storage

*** 20ul sizes contain 0.1% BSA

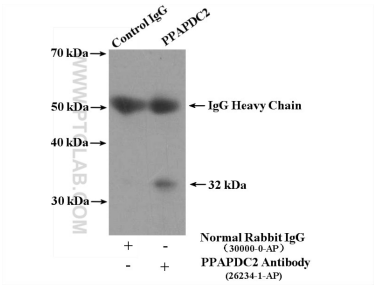
For technical support and original validation data for this product please contact:

T: 1 (888) 4PTGLAB (1-888-478-4522) (toll free in USA), or 1(312) 455-8498 (outside USA)

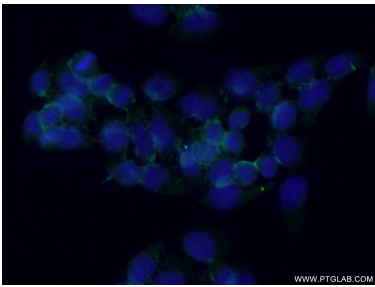
E: proteintech@ptglab.com
W: ptglab.com

This product is exclusively available under Proteintech Group brand and is not available to purchase from any other manufacturer.

Selected Validation Data



IP Result of anti-PPAPDC2 (IP:26234-1-AP, 4ug; Detection:26234-1-AP 1:300) with HepG2 cells lysate 3600ug.



Immunofluorescent analysis of (-20°C Ethanol) fixed L02 cells using 26234-1-AP (PPAPDC2 antibody) at dilution of 1:50 and Alexa Fluor 488-conjugated AffiniPure Goat Anti-Rabbit IgG(H+L).