

For Research Use Only

# RDX Polyclonal antibody

Catalog Number: 26105-1-AP



## Basic Information

**Catalog Number:**  
26105-1-AP

**Size:**  
150ul, Concentration: 300 µg/ml by Nanodrop and 240 µg/ml by Bradford method using BSA as the standard;

**Source:**  
Rabbit

**Isotype:**  
IgG

**Immunogen Catalog Number:**  
AG23532

**GenBank Accession Number:**  
BC047109

**GeneID (NCBI):**  
5962

**Full Name:**  
radixin

**Calculated MW:**  
583 aa, 68 kDa

**Observed MW:**  
70-75 kDa

**Purification Method:**  
Antigen affinity purification

**Recommended Dilutions:**  
WB 1:1000-1:4000  
IF 1:50-1:500

## Applications

**Tested Applications:**  
IF, WB, ELISA

**Species Specificity:**  
human, mouse, rat, monkey

**Positive Controls:**

**WB:** COS-7 cells, HeLa cells, Jurkat cells, mouse liver tissue, C6 cells, mouse brain tissue, mouse lung tissue, rat brain tissue

**IF:** HeLa cells,

## Background Information

### Storage

**Storage:**

Store at -20°C. Stable for one year after shipment.

**Storage Buffer:**

PBS with 0.02% sodium azide and 50% glycerol pH 7.3.

Aliquoting is unnecessary for -20°C storage

**\*\*\* 20ul sizes contain 0.1% BSA**

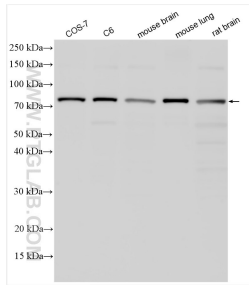
For technical support and original validation data for this product please contact:

T: 1 (888) 4PTGLAB (1-888-478-4522) (toll free in USA), or 1(312) 455-8498 (outside USA)

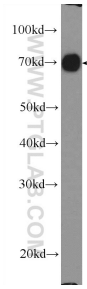
E: [proteintech@ptglab.com](mailto:proteintech@ptglab.com)  
W: [ptglab.com](http://ptglab.com)

**This product is exclusively available under Proteintech Group brand and is not available to purchase from any other manufacturer.**

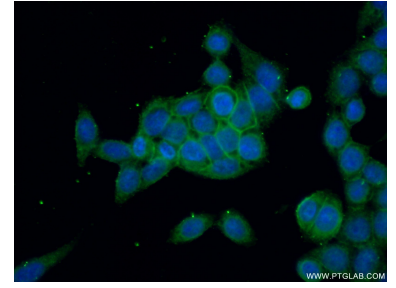
## Selected Validation Data



Various lysates were subjected to SDS PAGE followed by western blot with 26105-1-AP (RDX antibody) at dilution of 1:2000 incubated at room temperature for 1.5 hours.



mouse liver tissue were subjected to SDS PAGE followed by western blot with 26105-1-AP (RDX Antibody) at dilution of 1:1000 incubated at room temperature for 1.5 hours.



Immunofluorescent analysis of (-20°C Ethanol) fixed HeLa cells using 26105-1-AP (RDX antibody) at dilution of 1:50 and Alexa Fluor 488-conjugated AffiniPure Goat Anti-Rabbit IgG(H+L).