

For Research Use Only

C11orf80 Polyclonal antibody

Catalog Number: 25957-1-AP



Basic Information

Catalog Number: 25957-1-AP	GenBank Accession Number: BC028240	Purification Method: Antigen affinity purification
Size: 150ul, Concentration: 350 µg/ml by Nanodrop and 300 µg/ml by Bradford method using BSA as the standard;	GeneID (NCBI): 79703	Recommended Dilutions: WB 1:500-1:1000 IHC 1:20-1:200
Source: Rabbit	Full Name: chromosome 11 open reading frame 80	
Isotype: IgG	Calculated MW: 522 aa, 58 kDa	
Immunogen Catalog Number: AG22895	Observed MW: 70-75 kDa	

Applications

Tested Applications: IHC, WB, ELISA	Positive Controls: WB: L02 cells, IHC: human pancreas tissue, human liver tissue
Species Specificity: human	
Note-IHC: suggested antigen retrieval with TE buffer pH 9.0; (*) Alternatively, antigen retrieval may be performed with citrate buffer pH 6.0	

Background Information

C11orf80 locates at the chromosome 11. It has two isoforms with MW 70-75 kDa.

Storage

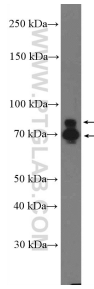
Storage:
Store at -20°C. Stable for one year after shipment.
Storage Buffer:
PBS with 0.02% sodium azide and 50% glycerol pH 7.3.
Aliquoting is unnecessary for -20°C storage

*** 20ul sizes contain 0.1% BSA

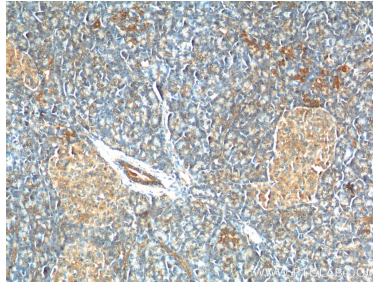
For technical support and original validation data for this product please contact:
T: 1 (888) 4PTGLAB (1-888-478-4522) (toll free in USA), or 1(312) 455-8498 (outside USA)
E: proteintech@ptglab.com
W: ptglab.com

This product is exclusively available under Proteintech Group brand and is not available to purchase from any other manufacturer.

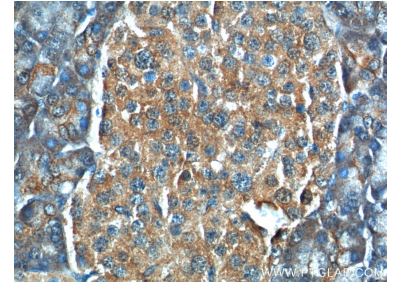
Selected Validation Data



L02 cells were subjected to SDS PAGE followed by western blot with 25957-1-AP (C11orf80 Antibody) at dilution of 1:600 incubated at room temperature for 1.5 hours.



Immunohistochemical analysis of paraffin-embedded human pancreas tissue slide using 25957-1-AP (C11orf80 Antibody) at dilution of 1:200 (under 10x lens).



Immunohistochemical analysis of paraffin-embedded human pancreas tissue slide using 25957-1-AP (C11orf80 Antibody) at dilution of 1:200 (under 40x lens).