

For Research Use Only

# C20orf3/APMAP Polyclonal antibody



Catalog Number: 25953-1-AP

Featured Product

2 Publications

## Basic Information

<b>Catalog Number:</b> 25953-1-AP	<b>GenBank Accession Number:</b> BC003501	<b>Purification Method:</b> Antigen affinity purification
<b>Size:</b> 150ul, Concentration: 350 µg/ml by Nanodrop and 213 µg/ml by Bradford method using BSA as the standard;	<b>GeneID (NCBI):</b> 57136	<b>Recommended Dilutions:</b> WB 1:500-1:1000 IP 0.5-4.0 µg for 1.0-3.0 mg of total protein lysate IHC 1:50-1:500
<b>Source:</b> Rabbit	<b>Full Name:</b> chromosome 20 open reading frame 3	
<b>Isotype:</b> IgG	<b>Calculated MW:</b> 416 aa, 46 kDa	
<b>Immunogen Catalog Number:</b> AG23029	<b>Observed MW:</b> 42-46 kDa	

## Applications

<b>Tested Applications:</b> IHC, IP, WB, ELISA	<b>Positive Controls:</b> WB: HepG2 cells, IP: mouse liver tissue, IHC: human kidney tissue,
<b>Cited Applications:</b> IF, IHC, WB	
<b>Species Specificity:</b> human, mouse	
<b>Cited Species:</b> human, mouse	
<b>Note-IHC: suggested antigen retrieval with TE buffer pH 9.0; (*) Alternatively, antigen retrieval may be performed with citrate buffer pH 6.0</b>	

## Background Information

### Notable Publications

Author	Pubmed ID	Journal	Application
Siyuan Jiang	30987997	Cancer Res	WB,IHC,IF
Javier Sánchez-Marco	37898391	J Nutr Biochem	WB

## Storage

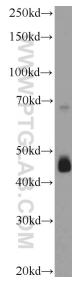
**Storage:**  
Store at -20°C. Stable for one year after shipment.  
**Storage Buffer:**  
PBS with 0.02% sodium azide and 50% glycerol pH 7.3.  
Aliquoting is unnecessary for -20°C storage

\*\*\* 20ul sizes contain 0.1% BSA

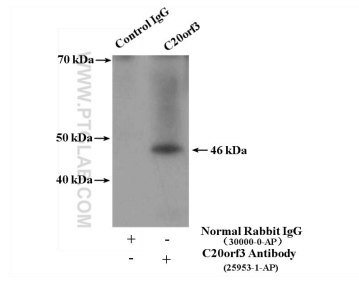
For technical support and original validation data for this product please contact:  
T: 1 (888) 4PTGLAB (1-888-478-4522) (toll free in USA), or 1(312) 455-8498 (outside USA)  
E: proteintech@ptglab.com  
W: ptglab.com

This product is exclusively available under Proteintech Group brand and is not available to purchase from any other manufacturer.

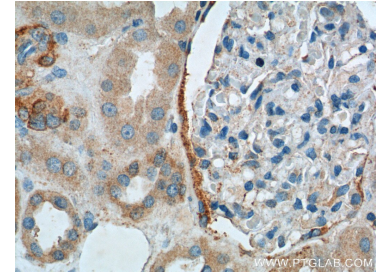
## Selected Validation Data



HepG2 cells were subjected to SDS PAGE followed by western blot with 25953-1-AP (C20orf3 Antibody) at dilution of 1:600 incubated at room temperature for 1.5 hours.



IP Result of anti-C20orf3 (IP:25953-1-AP, 4ug; Detection:25953-1-AP 1:300) with mouse liver tissue lysate 4800ug.



Immunohistochemical analysis of paraffin-embedded human kidney tissue slide using 25953-1-AP (C20orf3 Antibody) at dilution of 1:200 (under 40x lens).