

For Research Use Only

# KLHL10 Polyclonal antibody

Catalog Number: 25591-1-AP



## Basic Information

<b>Catalog Number:</b> 25591-1-AP	<b>GenBank Accession Number:</b> BC067753	<b>Purification Method:</b> Antigen affinity purification
<b>Size:</b> 150ul , Concentration: 350 µg/ml by Nanodrop and 233 µg/ml by Bradford method using BSA as the standard;	<b>GeneID (NCBI):</b> 317719	<b>Recommended Dilutions:</b> WB 1:500-1:2000
<b>Source:</b> Rabbit	<b>Full Name:</b> kelch-like 10 (Drosophila)	
<b>Isotype:</b> IgG	<b>Calculated MW:</b> 608 aa, 69 kDa	
<b>Immunogen Catalog Number:</b> AG22368	<b>Observed MW:</b> 65-70 kDa	

## Applications

<b>Tested Applications:</b> WB, ELISA	<b>Positive Controls:</b> WB : mouse testis tissue, rat testis tissue
<b>Species Specificity:</b> human, mouse, rat	

## Background Information

### Storage

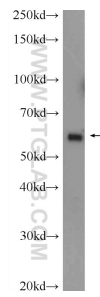
**Storage:**  
Store at -20°C. Stable for one year after shipment.  
**Storage Buffer:**  
PBS with 0.02% sodium azide and 50% glycerol pH 7.3.  
Aliquoting is unnecessary for -20°C storage

\*\*\* 20ul sizes contain 0.1% BSA

For technical support and original validation data for this product please contact:  
T: 1 (888) 4PTGLAB (1-888-478-4522) (toll free in USA), or 1(312) 455-8498 (outside USA)      E: proteintech@ptglab.com  
W: ptglab.com

This product is exclusively available under Proteintech Group brand and is not available to purchase from any other manufacturer.

## Selected Validation Data



mouse testis tissue were subjected to SDS PAGE followed by western blot with 25591-1-AP (KLHL10 Antibody) at dilution of 1:1000 incubated at 4 degree celsius over night.