

For Research Use Only

LRRC20 Polyclonal antibody

Catalog Number: 25562-1-AP



Basic Information

Catalog Number: 25562-1-AP	GenBank Accession Number: BC024001	Purification Method: Antigen affinity purification
Size: 150ul , Concentration: 650 µg/ml by Nanodrop and 353 µg/ml by Bradford method using BSA as the standard;	GeneID (NCBI): 55222	Recommended Dilutions: WB 1:500-1:1000 IHC 1:20-1:200 IF 1:50-1:500
Source: Rabbit	Full Name: leucine rich repeat containing 20	
Isotype: IgG	Calculated MW: 184 aa, 21 kDa	
Immunogen Catalog Number: AG22119	Observed MW: 21-25 kDa	

Applications

Tested Applications: IF, IHC, WB, ELISA	Positive Controls: WB : NIH/3T3 cells, Y79 cells
Species Specificity: human, mouse	IHC : human testis tissue, human stomach cancer tissue, human colon tissue
Note-IHC: suggested antigen retrieval with TE buffer pH 9.0; (*) Alternatively, antigen retrieval may be performed with citrate buffer pH 6.0	IF : A431 cells,

Background Information

Storage

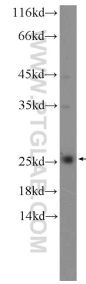
Storage:
Store at -20°C. Stable for one year after shipment.
Storage Buffer:
PBS with 0.02% sodium azide and 50% glycerol pH 7.3.
Aliquoting is unnecessary for -20°C storage

*** 20ul sizes contain 0.1% BSA

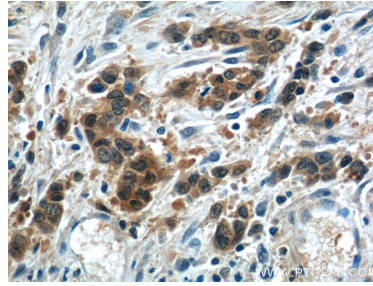
For technical support and original validation data for this product please contact:
T: 1 (888) 4PTGLAB (1-888-478-4522) (toll free in USA), or 1(312) 455-8498 (outside USA) E: proteintech@ptglab.com
W: ptglab.com

This product is exclusively available under Proteintech Group brand and is not available to purchase from any other manufacturer.

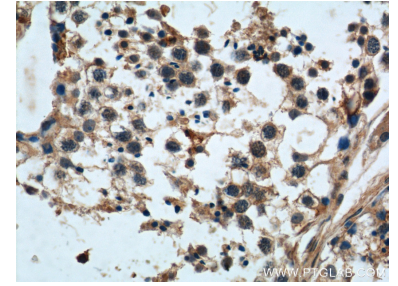
Selected Validation Data



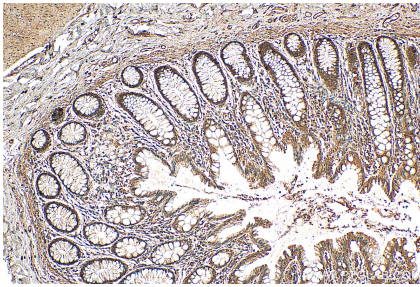
NIH/3T3 cells were subjected to SDS PAGE followed by western blot with 25562-1-AP (LRRC20 Antibody) at dilution of 1:600 incubated at 4 degree celsius over night.



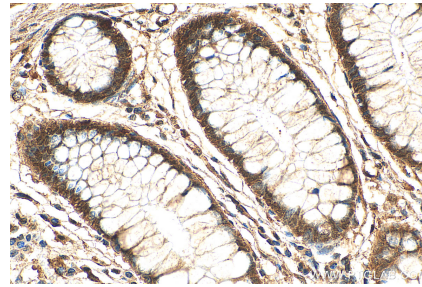
Immunohistochemical analysis of paraffin-embedded human stomach cancer tissue slide using 25562-1-AP (LRRC20 Antibody) at dilution of 1:50 (under 40x lens).



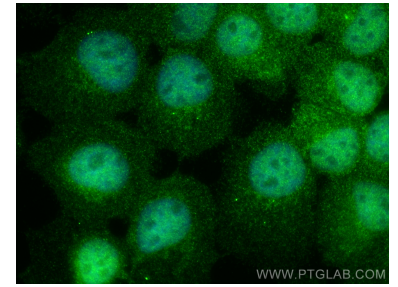
Immunohistochemical analysis of paraffin-embedded human testis tissue slide using 25562-1-AP (LRRC20 Antibody) at dilution of 1:50 (under 40x lens).



Immunohistochemical analysis of paraffin-embedded human colon tissue slide using 25562-1-AP (LRRC20 antibody) at dilution of 1:200 (under 10x lens). Heat mediated antigen retrieval with Tris-EDTA buffer (pH 9.0).



Immunohistochemical analysis of paraffin-embedded human colon tissue slide using 25562-1-AP (LRRC20 antibody) at dilution of 1:200 (under 40x lens). Heat mediated antigen retrieval with Tris-EDTA buffer (pH 9.0).



Immunofluorescent analysis of (4% PFA) fixed A431 cells using LRRC20 antibody (25562-1-AP) at dilution of 1:200 and CoraLite@488-Conjugated AffiniPure Goat Anti-Rabbit IgG(H+L).