

For Research Use Only

# DKC1 Polyclonal antibody

Catalog Number: 25420-1-AP

Featured Product

2 Publications



## Basic Information

<b>Catalog Number:</b> 25420-1-AP	<b>GenBank Accession Number:</b> BC009928	<b>Purification Method:</b> Antigen affinity purification
<b>Size:</b> 150ul , Concentration: 700 µg/ml by Nanodrop and 393 µg/ml by Bradford method using BSA as the standard;	<b>GeneID (NCBI):</b> 1736	<b>Recommended Dilutions:</b> WB 1:500-1:2400 IHC 1:250-1:1000 IF 1:50-1:500
<b>Source:</b> Rabbit	<b>Full Name:</b> dyskeratosis congenita 1, dyskerin	
<b>Isotype:</b> IgG	<b>Calculated MW:</b> 58 kDa	
<b>Immunogen Catalog Number:</b> AG7992	<b>Observed MW:</b> 58 kDa	

## Applications

<b>Tested Applications:</b> IF, IHC, WB, ELISA	<b>Positive Controls:</b>
<b>Cited Applications:</b> WB	<b>WB :</b> HepG2 cells, HeLa cells, COLO 320 cells, Jurkat cells, MCF-7 cells
<b>Species Specificity:</b> human	<b>IHC :</b> human colon cancer tissue,
<b>Cited Species:</b> human	<b>IF :</b> HepG2 cells,

**Note-IHC: suggested antigen retrieval with TE buffer pH 9.0; (\*) Alternatively, antigen retrieval may be performed with citrate buffer pH 6.0**

## Background Information

### Notable Publications

Author	Pubmed ID	Journal	Application
Cai Han	35354054	Cell Rep	WB
Yan Zhang	27573912	Stem Cells	WB

## Storage

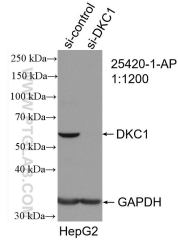
**Storage:**  
Store at -20°C. Stable for one year after shipment.  
**Storage Buffer:**  
PBS with 0.02% sodium azide and 50% glycerol pH 7.3.  
Aliquoting is unnecessary for -20°C storage

\*\*\* 20ul sizes contain 0.1% BSA

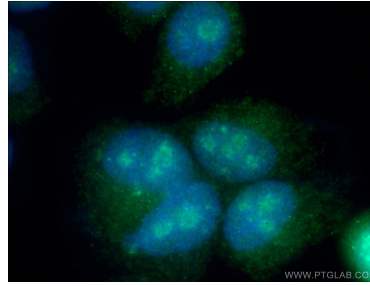
For technical support and original validation data for this product please contact:  
T: 1 (888) 4PTGLAB (1-888-478-4522) (toll free in USA), or 1(312) 455-8498 (outside USA)  
E: proteintech@ptglab.com  
W: ptglab.com

This product is exclusively available under Proteintech Group brand and is not available to purchase from any other manufacturer.

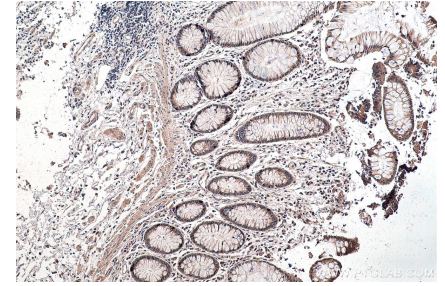
## Selected Validation Data



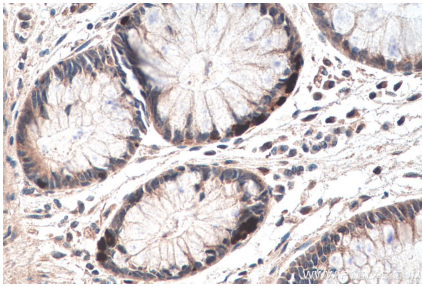
WB result of DKC1 antibody (25420-1-AP; 1:1200; incubated at room temperature for 1.5 hours) with sh-Control and sh-DKC1 transfected HepG2 cells.



Immunofluorescent analysis of (4% PFA) fixed HepG2 cells using 25420-1-AP (DKC1 antibody) at dilution of 1:50 and Alexa Fluor 488-Conjugated AffiniPure Goat Anti-Rabbit IgG(H+L).



Immunohistochemical analysis of paraffin-embedded human colon cancer tissue slide using 25420-1-AP (DKC1 antibody) at dilution of 1:500 (under 10x lens). Heat mediated antigen retrieval with Tris-EDTA buffer (pH 9.0).



Immunohistochemical analysis of paraffin-embedded human colon cancer tissue slide using 25420-1-AP (DKC1 antibody) at dilution of 1:500 (under 40x lens). Heat mediated antigen retrieval with Tris-EDTA buffer (pH 9.0).