

For Research Use Only

# REM2 Polyclonal antibody

Catalog Number: 25371-1-AP



## Basic Information

<b>Catalog Number:</b> 25371-1-AP	<b>GenBank Accession Number:</b> BC035663	<b>Purification Method:</b> Antigen affinity purification
<b>Size:</b> 150ul , Concentration: 900 µg/ml by Nanodrop and 440 µg/ml by Bradford method using BSA as the standard;	<b>GeneID (NCBI):</b> 161253	<b>Recommended Dilutions:</b> WB 1:500-1:2000
<b>Source:</b> Rabbit	<b>Full Name:</b> RAS (RAD and GEM)-like GTP binding	
<b>Isotype:</b> IgG	<b>Calculated MW:</b> 340 aa, 37 kDa	
<b>Immunogen Catalog Number:</b> AG21991	<b>Observed MW:</b> 37 kDa	

## Applications

<b>Tested Applications:</b> WB, ELISA	<b>Positive Controls:</b> WB : fetal human brain tissue,
<b>Species Specificity:</b> human, mouse	

## Background Information

Rem2 is a member of the RGK subfamily of RAS small GTPases. Rem2 inhibits high voltage activated calcium channels, is involved in synaptogenesis, and regulates dendritic morphology. Rem2 is the primary RGK protein expressed in the nervous system, but to date, the precise expression patterns of this protein are unknown.

## Storage

**Storage:**  
Store at -20°C. Stable for one year after shipment.  
**Storage Buffer:**  
PBS with 0.02% sodium azide and 50% glycerol pH 7.3.  
Aliquoting is unnecessary for -20°C storage

**\*\*\* 20ul sizes contain 0.1% BSA**

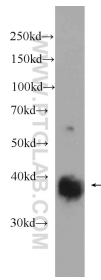
For technical support and original validation data for this product please contact:

T: 1 (888) 4PTGLAB (1-888-478-4522) (toll free in USA), or 1(312) 455-8498 (outside USA)

E: [proteintech@ptglab.com](mailto:proteintech@ptglab.com)  
W: [ptglab.com](http://ptglab.com)

**This product is exclusively available under Proteintech Group brand and is not available to purchase from any other manufacturer.**

## Selected Validation Data



fetal human brain tissue were subjected to SDS PAGE followed by western blot with 25371-1-AP (REM2 Antibody) at dilution of 1:1000 incubated at room temperature for 1.5 hours.