

For Research Use Only

# RSPO1 Polyclonal antibody

Catalog Number: 25348-1-AP **5 Publications**



## Basic Information

<b>Catalog Number:</b> 25348-1-AP	<b>GenBank Accession Number:</b> BC114966	<b>Purification Method:</b> Antigen affinity purification
<b>Size:</b> 150ul , Concentration: 900 µg/ml by Nanodrop and 366 µg/ml by Bradford method using BSA as the standard;	<b>GeneID (NCBI):</b> 284654	<b>Recommended Dilutions:</b> WB 1:1000-1:6000 IHC 1:500-1:2000
<b>Source:</b> Rabbit	<b>Full Name:</b> R-spondin homolog (Xenopus laevis)	
<b>Isotype:</b> IgG	<b>Calculated MW:</b> 263 aa, 29 kDa	
<b>Immunogen Catalog Number:</b> AG21858	<b>Observed MW:</b> 29 kDa	

## Applications

<b>Tested Applications:</b> IHC, WB, ELISA	<b>Positive Controls:</b> WB : human plasma, rat plasma IHC : human kidney tissue,
<b>Cited Applications:</b> IF, WB	
<b>Species Specificity:</b> human, rat	
<b>Cited Species:</b> human, mouse	
<b>Note-IHC: suggested antigen retrieval with TE buffer pH 9.0; (*) Alternatively, antigen retrieval may be performed with citrate buffer pH 6.0</b>	

## Background Information

RSPO1, also named R-spondin-1, Activator of the canonical Wnt signaling pathway by acting as a ligand for LGR4-6 receptors. Acts as a ligand for frizzled FZD8 and LRP6. May negatively regulate the TGF-beta pathway. Has a essential role in ovary determination. Regulates Wnt signaling by antagonizing DKK1/KREM1-mediated internalization of LRP6 through an interaction with KREM1. RSPO1 seems to mainly localize to nucleoli (PMID:17804805).

## Notable Publications

Author	Pubmed ID	Journal	Application
Almudena Chaves-Pérez	36098959	J Exp Med	WB,IF
Bhupesh Singla	32750106	Cardiovasc Res	WB
Chiung-Fang Chang	27314333	Int J Mol Sci	WB

## Storage

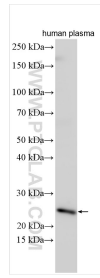
**Storage:**  
Store at -20°C. Stable for one year after shipment.  
**Storage Buffer:**  
PBS with 0.02% sodium azide and 50% glycerol pH 7.3.  
Aliquoting is unnecessary for -20°C storage

\*\*\* 20ul sizes contain 0.1% BSA

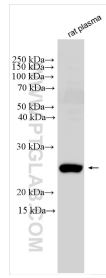
For technical support and original validation data for this product please contact:  
T: 1 (888) 4PTGLAB (1-888-478-4522) (toll free in USA), or 1(312) 455-8498 (outside USA)  
E: proteintech@ptglab.com  
W: ptglab.com

This product is exclusively available under Proteintech Group brand and is not available to purchase from any other manufacturer.

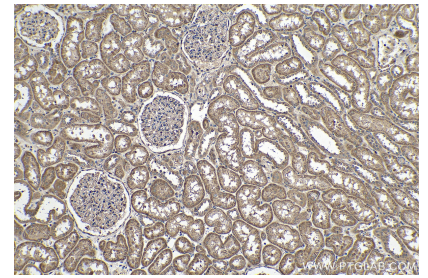
## Selected Validation Data



human plasma were subjected to SDS PAGE followed by western blot with 25348-1-AP (RSPO1 antibody) at dilution of 1:3000 incubated at room temperature for 1.5 hours.



rat plasma were subjected to SDS PAGE followed by western blot with 25348-1-AP (RSPO1 antibody) at dilution of 1:1000 incubated at room temperature for 1.5 hours.



Immunohistochemical analysis of paraffin-embedded human kidney tissue slide using 25348-1-AP (RSPO1 antibody) at dilution of 1:1000 (under 10x lens). Heat mediated antigen retrieval with Tris-EDTA buffer (pH 9.0).