

For Research Use Only

MYT1L Polyclonal antibody

Catalog Number: 25234-1-AP

Featured Product

4 Publications



Basic Information

Catalog Number: 25234-1-AP	GenBank Accession Number: BC137273	Purification Method: Antigen affinity purification
Size: 150ul , Concentration: 800 µg/ml by Nanodrop and 513 µg/ml by Bradford method using BSA as the standard;	GeneID (NCBI): 23040	Recommended Dilutions: WB 1:500-1:1000
Source: Rabbit	Full Name: myelin transcription factor 1-like	
Isotype: IgG	Calculated MW: 1186 aa, 133 kDa	
Immunogen Catalog Number: AG18698	Observed MW: 110 kDa	

Applications

Tested Applications: WB, ELISA	Positive Controls: WB : HepG2 cells, HeLa cells
Cited Applications: IF, IP, WB	
Species Specificity: human	
Cited Species: human, mouse	

Background Information

Notable Publications

Author	Pubmed ID	Journal	Application
Jiayang Chen	34614421	Neuron	WB,IF
Zhengtao Yu	34848272	Brain Res Bull	WB
Young Mi Oh	36303071	Nat Neurosci	IF

Storage

Storage:
Store at -20°C. Stable for one year after shipment.
Storage Buffer:
PBS with 0.02% sodium azide and 50% glycerol pH 7.3.
Aliquoting is unnecessary for -20°C storage

*** 20ul sizes contain 0.1% BSA

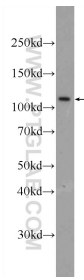
For technical support and original validation data for this product please contact:

T: 1 (888) 4PTGLAB (1-888-478-4522) (toll free in USA), or 1(312) 455-8498 (outside USA)

E: proteintech@ptglab.com
W: ptglab.com

This product is exclusively available under Proteintech Group brand and is not available to purchase from any other manufacturer.

Selected Validation Data



HepG2 cells were subjected to SDS PAGE followed by western blot with 25234-1-AP (MYT1L Antibody) at dilution of 1:600 incubated at room temperature for 1.5 hours.