

For Research Use Only

Adropin Polyclonal antibody

Catalog Number: 25213-1-AP



Basic Information

Catalog Number: 25213-1-AP	GenBank Accession Number: BC022101	Purification Method: Antigen affinity purification
Size: 150ul , Concentration: 1000 µg/ml by Nanodrop;	GeneID (NCBI): 375704	Recommended Dilutions: IHC 1:50-1:500 IF 1:200-1:800
Source: Rabbit	Full Name: energy homeostasis associated	
Isotype: IgG	Calculated MW: 75 aa, 8 kDa	
Immunogen Catalog Number: AG19526		

Applications

Tested Applications: IHC, ELISA	Positive Controls: IHC : human liver tissue, IF : SH-SY5Y cells,
Species Specificity: human	

Note-IHC: suggested antigen retrieval with TE buffer pH 9.0; (*) Alternatively, antigen retrieval may be performed with citrate buffer pH 6.0

Background Information

Adropin is a nutritionally regulated peptide hormone that is primarily secreted by the liver and is important in maintaining metabolic and non-metabolic homeostasis. Adropin regulates glucose and fatty acid metabolism and exerts a potential protective effect on endothelial function through modulation of endothelial nitric oxide (NO) synthesis. It is associated with obesity and is involved in the prevention of insulin resistance, dyslipidemia, and impaired glucose tolerance (PMID: 22318315).

Storage

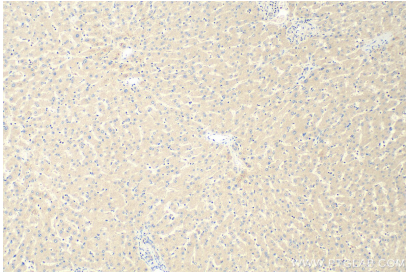
Storage:
Store at -20°C. Stable for one year after shipment.
Storage Buffer:
PBS with 0.02% sodium azide and 50% glycerol pH 7.3.
Aliquoting is unnecessary for -20°C storage

*** 20ul sizes contain 0.1% BSA

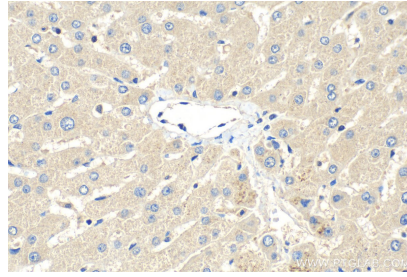
For technical support and original validation data for this product please contact:
T: 1 (888) 4PTGLAB (1-888-478-4522) (toll free in USA), or 1(312) 455-8498 (outside USA)
E: proteintech@ptglab.com
W: ptglab.com

This product is exclusively available under Proteintech Group brand and is not available to purchase from any other manufacturer.

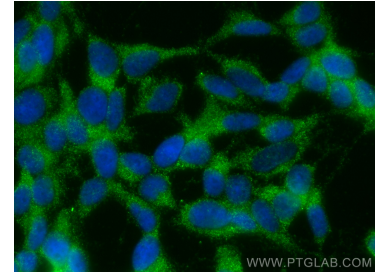
Selected Validation Data



Immunohistochemical analysis of paraffin-embedded human liver tissue slide using 25213-1-AP (Adropin antibody) at dilution of 1:200 (under 10x lens). Heat mediated antigen retrieval with Tris-EDTA buffer (pH 9.0).



Immunohistochemical analysis of paraffin-embedded human liver tissue slide using 25213-1-AP (Adropin antibody) at dilution of 1:200 (under 40x lens). Heat mediated antigen retrieval with Tris-EDTA buffer (pH 9.0).



Immunofluorescent analysis of (-20°C Ethanol) fixed SH-SY5Y cells using Adropin antibody (25213-1-AP) at dilution of 1:400 and CoraLite®488-Conjugated AffiniPure Goat Anti-Rabbit IgG(H+L).