

For Research Use Only

KIAA0125 Polyclonal antibody

Catalog Number: 25195-1-AP



Basic Information

Catalog Number: 25195-1-AP	GenBank Accession Number: BC030286	Purification Method: Antigen affinity purification
Size: 150ul , Concentration: 800 µg/ml by Nanodrop and 373 µg/ml by Bradford method using BSA as the standard;	GeneID (NCBI): 29064	Recommended Dilutions: IHC 1:20-1:200
Source: Rabbit	Full Name: family with sequence similarity 30, member A	
Isotype: IgG	Calculated MW: 154 aa, 17 kDa	
Immunogen Catalog Number: AG18238		

Applications

Tested Applications: IHC, ELISA	Positive Controls: IHC : human liver cancer tissue, human placenta tissue
Species Specificity: human	
Note-IHC: suggested antigen retrieval with TE buffer pH 9.0; (*) Alternatively, antigen retrieval may be performed with citrate buffer pH 6.0	

Background Information

KIAA0125, also named as FAM30A and C14orf110, could be involved in neurogenesis. It may be a counter player of NEUROG2.

Storage

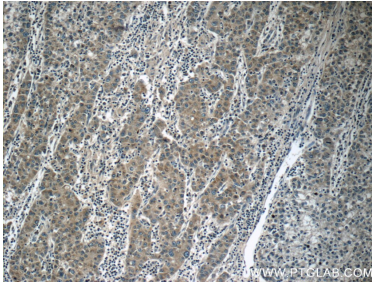
Storage:
Store at -20°C. Stable for one year after shipment.
Storage Buffer:
PBS with 0.02% sodium azide and 50% glycerol pH 7.3.
Aliquoting is unnecessary for -20°C storage

*** 20ul sizes contain 0.1% BSA

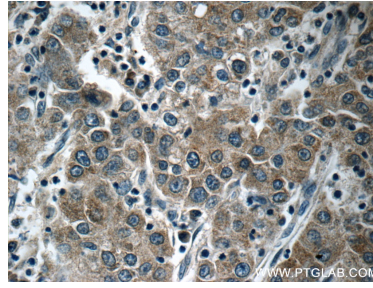
For technical support and original validation data for this product please contact:
T: 1 (888) 4PTGLAB (1-888-478-4522) (toll free in USA), or 1(312) 455-8498 (outside USA) E: proteintech@ptglab.com W: ptglab.com

This product is exclusively available under Proteintech Group brand and is not available to purchase from any other manufacturer.

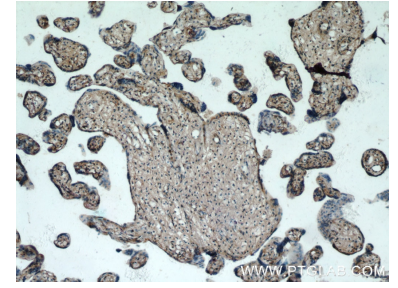
Selected Validation Data



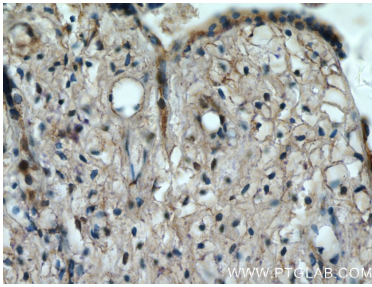
Immunohistochemical analysis of paraffin-embedded human liver cancer tissue slide using 25195-1-AP (KIAA0125 antibody at dilution of 1:50) (under 10x lens).



Immunohistochemical analysis of paraffin-embedded human liver cancer tissue slide using 25195-1-AP (KIAA0125 antibody at dilution of 1:50) (under 40x lens).



Immunohistochemical analysis of paraffin-embedded human placenta tissue slide using 25195-1-AP (KIAA0125 antibody at dilution of 1:50) (under 10x lens).



Immunohistochemical analysis of paraffin-embedded human placenta tissue slide using 25195-1-AP (KIAA0125 antibody at dilution of 1:50) (under 40x lens).