

For Research Use Only

MAGI2 Polyclonal antibody

Catalog Number: 25189-1-AP



Basic Information

Catalog Number: 25189-1-AP	GenBank Accession Number: BC150277	Purification Method: Antigen affinity purification
Size: 150ul , Concentration: 800 µg/ml by Nanodrop;	GeneID (NCBI): 9863	Recommended Dilutions: WB 1:5000-1:50000
Source: Rabbit	Full Name: membrane associated guanylate kinase, WW and PDZ domain containing 2	
Isotype: IgG	Calculated MW: 1455 aa, 159 kDa	
Immunogen Catalog Number: AG18279	Observed MW: 140 kDa	

Applications

Tested Applications: WB, ELISA	Positive Controls: WB : mouse brain tissue, rat brain tissue
Species Specificity: human, mouse, rat	

Background Information

MAGI proteins are scaffolding proteins, belonging to the Membrane-Associated Guanylate Kinase Inverted proteins of MAGUK family. There are three members of the MAGI subfamily, MAGI-1, MAGI-2 and MAGI-3. They are comprised of 6 PDZ domains, 2 WW domains, and 1 GUK domain. They have been proved to mediate the transport and signal transduction of various G protein coupled receptors (GPCRs) (PMID: 29625175). The antibody is specific to MAGI2.

Storage

Storage:
Store at -20°C. Stable for one year after shipment.
Storage Buffer:
PBS with 0.02% sodium azide and 50% glycerol pH 7.3.
Aliquoting is unnecessary for -20°C storage

*** 20ul sizes contain 0.1% BSA

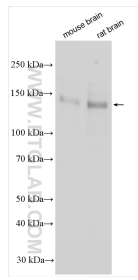
For technical support and original validation data for this product please contact:

T: 1 (888) 4PTGLAB (1-888-478-4522) (toll free in USA), or 1(312) 455-8498 (outside USA)

E: proteintech@ptglab.com
W: ptglab.com

This product is exclusively available under Proteintech Group brand and is not available to purchase from any other manufacturer.

Selected Validation Data



Various lysates were subjected to SDS PAGE followed by western blot with 25189-1-AP (MAG1 antibody) at dilution of 1:10000 incubated at room temperature for 1.5 hours.